



Exploration Done Differently

Finding Nevada's Next Discovery

October 27, 2021

Corporate Presentation

TSX-V: RDG | OTCQB: RDGMF
FRA: OGC0



CAUTIONARY STATEMENT

Disclaimer

Forward Looking Statements

Statements contained in this press release that are not historical facts are “forward-looking information” or “forward-looking statements” (collectively, “Forward-Looking Information”) within the meaning of applicable Canadian securities legislation and the United States Private Securities Litigation Reform Act of 1995. Forward-Looking Information includes, but is not limited to, the anticipated benefits of the Earn-In Agreement and the transaction contemplated thereby. The words “potential”, “anticipate”, “meaningful”, “discovery”, “forecast”, “believe”, “estimate”, “expect”, “may”, “will”, “project”, “plan”, “historical”, “historic” and similar expressions are intended to be among the statements that identify Forward-Looking Information. Forward-Looking Information involves known and unknown risks, uncertainties and other factors which may cause the actual results to be materially different from any future results expressed or implied by the Forward-Looking Information. In preparing the Forward-Looking Information in this news release, Ridgeline has applied several material assumptions, including, but not limited to, assumptions that the current objectives concerning its mineral projects (including Swift) can be achieved and that its other corporate activities will proceed as expected; that general business and economic conditions will not change in a materially adverse manner; and that all requisite information will be available in a timely manner. Forward-Looking Information involves known and unknown risks, uncertainties and other factors which may cause the actual results, performance, or achievements of Ridgeline to be materially different from any future results, performance or achievements expressed or implied by the Forward-Looking Information. Such risks and other factors include, among others, risks related to dependence on key personnel; risks related to unforeseen delays; risks related to historical data that has not been verified by the Company; as well as those factors discussed in Ridgeline’s public disclosure record. Although Ridgeline has attempted to identify important factors that could affect Ridgeline and may cause actual actions, events, or results to differ materially from those described in Forward-Looking Information, there may be other factors that cause actions, events or results not to be as anticipated, estimated or intended. There can be no assurance that Forward-Looking Information will prove to be accurate, as actual results and future events could differ materially from those anticipated in such statements. Accordingly, readers should not place undue reliance on Forward-Looking Information. Except as required by law, Ridgeline does not assume any obligation to release publicly any revisions to Forward-Looking Information contained in this news release to reflect events or circumstances after the date hereof or to reflect the occurrence of unanticipated events.

Qualified Persons. Michael Harp, CPG., Vice President, Exploration, is the Qualified Person as defined by National Instrument 43-101 and has reviewed and approved the technical data in this presentation.

Footnotes:

(1) Adjacent Properties. This presentation contains information about adjacent properties on which Ridgeline Minerals does not have the right to explore or mine. Investors are cautioned that mineralization on adjacent properties is not necessarily indicative of mineralization that may be hosted on the Company’s properties.

(2) Readers are cautioned that the exploration targets at the Carlin-East, Swift, Bell Creek and Selena properties are early-stage exploration prospects and conceptual in nature. There has been insufficient exploration to define a mineral resource and it is uncertain if further exploration will result in the target being delineated as a mineral resource.

(3) Historical information contained in this presentation, maps or figures regarding the Company’s project or adjacent properties cannot be relied upon as the Company’s QP, as defined under NI 43-101 has not prepared nor verified the historical information.

(4) Source: Fraser Institute Annual Survey of Mining Companies 2018. Investment Attractiveness Index weights both policy perception (taxation levels, onerous regulations, quality of infrastructure, etc.) and mineral potential (40% / 60%) of 83 countries and provinces/states

(5) Source: Laurentian Bank Securities Equity Research: Compelling valuation for a growth-focused gold royalty company – October 21, 2020

(6) Source: Barrick Gold Quarterly Reporting: https://s25.q4cdn.com/322814910/files/doc_presentations/2021/Barrick-Q4-2020-Results-Presentation.pdf

(7) Source: Barrick Gold Quarterly Reporting: https://s25.q4cdn.com/322814910/files/doc_presentations/2020/Barrick-Investor-Day-2020-02-Exploration.pdf

(8) Source: South32 Website: <https://www.south32.net/our-business/exploration-projects/hermosa>

(9) Source: Barksdale Resources: Sunnyside “Targeting the Source” Schnell, Teal, Trotman 2018

(10) Source: Quattera Resources Inc. Website: https://quattera.com/wp-content/uploads/qta_by_web_0624.pdf



ABOUT US

Why Invest In Ridgeline Minerals

Ridgeline is a Nevada focused Gold-Silver explorer with a portfolio of four highly prospective exploration projects in the Carlin and Battle Mountain – Eureka Trends



LOCATION

Nevada – 154km² exploration portfolio in the top ranked mining jurisdiction in the world ⁽⁴⁾



STRATEGIC DRILLING CONTRACT

Industry leading drilling contract
= lower cost = more drilling =
higher potential for discovery



\$20M NEVADA GOLD MINES EARN-IN

\$20M earn-in agreement at the Swift project highlights Tier-1 discovery potential



EXPERIENCED GOLD EXPLORERS

Decades of experience finding several multi-million-ounce gold deposits in Nevada



NEW NEVADA DISCOVERY

Shallow-oxide, silver-gold-lead-zinc discovery at Selena in 2020



SHAREHOLDER FRIENDLY STRUCTURE

Tight share float with management owning ~15% of outstanding shares



Our Team

	EXPERIENCE	ACHIEVEMENTS	ROLES
Chad Peters , <i>B.Sc., P.Geo.</i> President, CEO & Director	10+ years	Nevada gold exploration, led multi-million ounce CSD Gap discovery with Premier Gold	<ul style="list-style-type: none"> Co-founder of Ridgeline Minerals Former US Exploration Manager, Premier Gold Mines Ltd.
Duane Lo , <i>CPA (CA)</i> CFO & Director	20+ years	International accounting and financial management experience for various public companies	<ul style="list-style-type: none"> Current CFO of Ridgeline Minerals and Entrée Resources Former CFO of Mason Resources and Luna Gold Comptroller for First Quantum
Mike Harp , <i>M.Sc., CPG.</i> Vice President, Exploration	10+ years	Nevada gold exploration, led multi-million ounce North Dark Star discovery with Gold Standard Ventures	<ul style="list-style-type: none"> Qualified person as defined by NI 43-101 Former Senior Exploration Geologist – Gold Standard
Terese Gieselman Corporate Secretary	30+ years	CFO and Corporate Secretary for multiple publicly traded companies	<ul style="list-style-type: none"> Founder & President of Minco Corp. Management Inc. Compliance and corporate financial reporting
Lewis Teal , <i>M.Sc., P.Geo.</i> Independent Director	35+ years	Global exploration, discovered over 20+ Moz of gold	<ul style="list-style-type: none"> Newmont Group Executive, South American Exploration Senior Newmont Exploration Geologist, Carlin-Trend
Peter Hardie , <i>CPA (CA)</i> Independent Director	20+ years	International accounting, financial management and mine development experience	<ul style="list-style-type: none"> CFO of Equinox Gold Former CFO of True Gold and Nevsun Resources
Mike Blady , <i>B.Sc. Geology</i> Independent Director	10+ years	Senior management of multiple public resource companies with extensive capital markets background	<ul style="list-style-type: none"> President, CEO & Director of Golden Ridge Resources
Geoff Chater , <i>B.Sc. Geology</i> Strategic Advisor	30+ years	Mineral exploration experience across four continents and capital markets consultant to multiple publicly traded companies	<ul style="list-style-type: none"> Independent Director – New Gold Inc. Former Director of Nevsun Resources, Reservoir Minerals and Valley High Ventures
Mac Jackson , <i>M.Sc., CPG.</i> Technical Advisor	25+ years	Gold exploration, discovered the multi-million ounce Leeville, Fiberline and North Dark Star deposits in Nevada	<ul style="list-style-type: none"> Former Vice President, Exploration for Gold Standard Ventures Former Senior exploration geologist, Newmont Corp.
Steve Neilsen Technical Advisor	40+ years	Owner of a Nevada-based drilling and mining operations support services	<ul style="list-style-type: none"> Co-founder of Ridgeline Minerals President of Envirotech Drilling LLC

ALIGNED WITH SHAREHOLDERS Capital Structure

As at October 1, 2021



15% Management

- Chad Peters – 6.8%

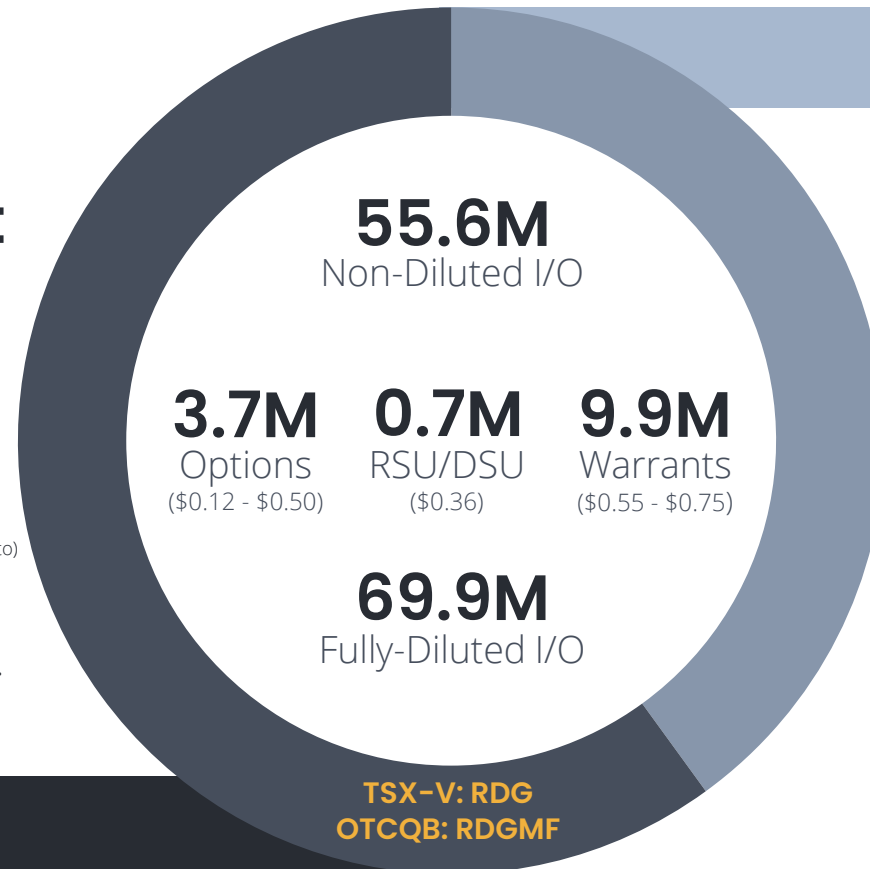
16% Public Companies

- EMX Royalty
- Vior Inc.
- Ethos Gold

13% Institutions (including but not limited to)

- Commodity Capital
- Commodity Discovery Fund
- Stephens Investment Mgmt.

56% Retail Investors



Cash ~ C\$3.0M



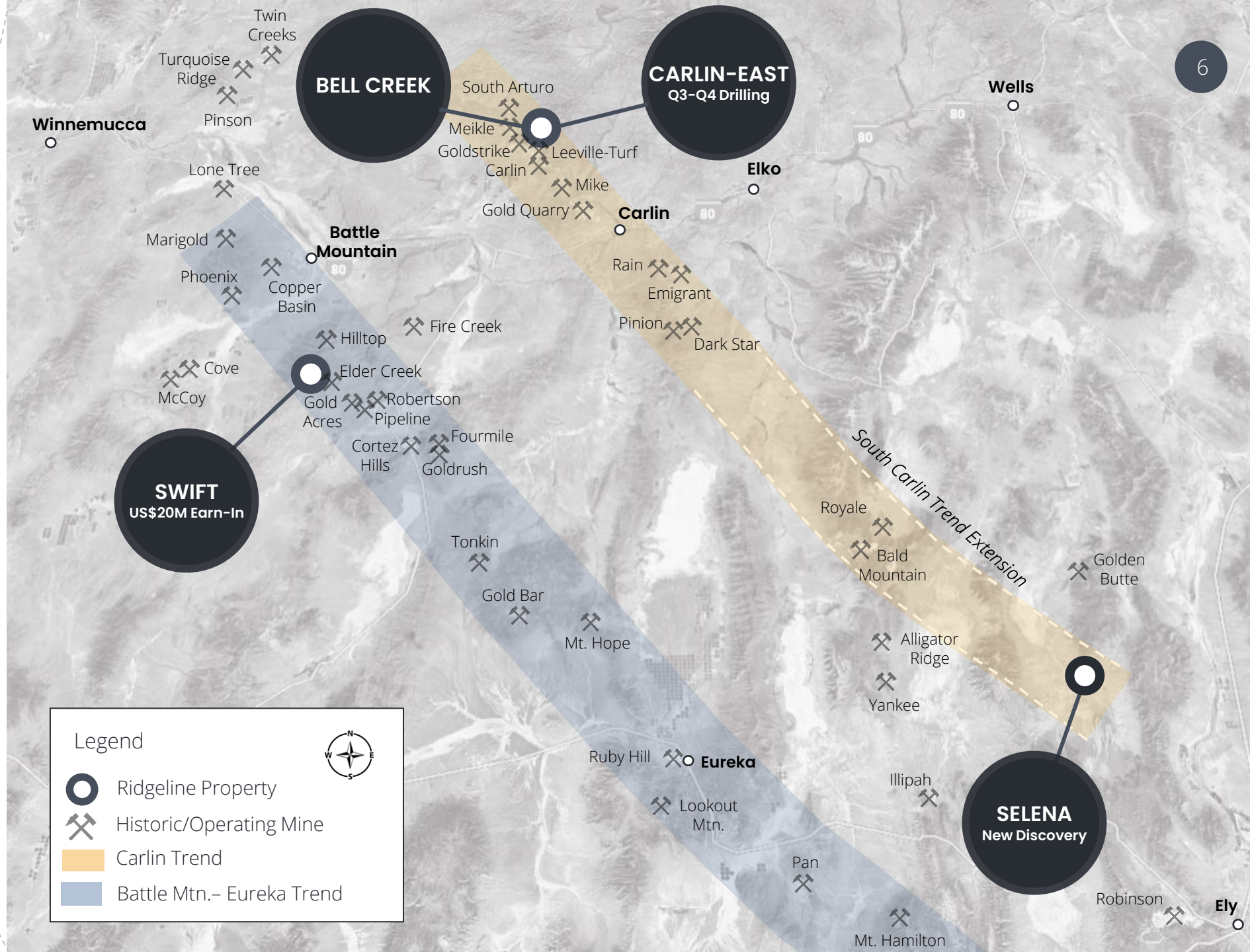
Recent Financing

C\$3.75M raised @ \$0.50

- ½ warrant @ \$0.75
- Accelerator @ \$1.50
- Closed May 3, 2021

4 Projects

4 highly prospective projects
on the Carlin and Battle
Mountain – Eureka Trends



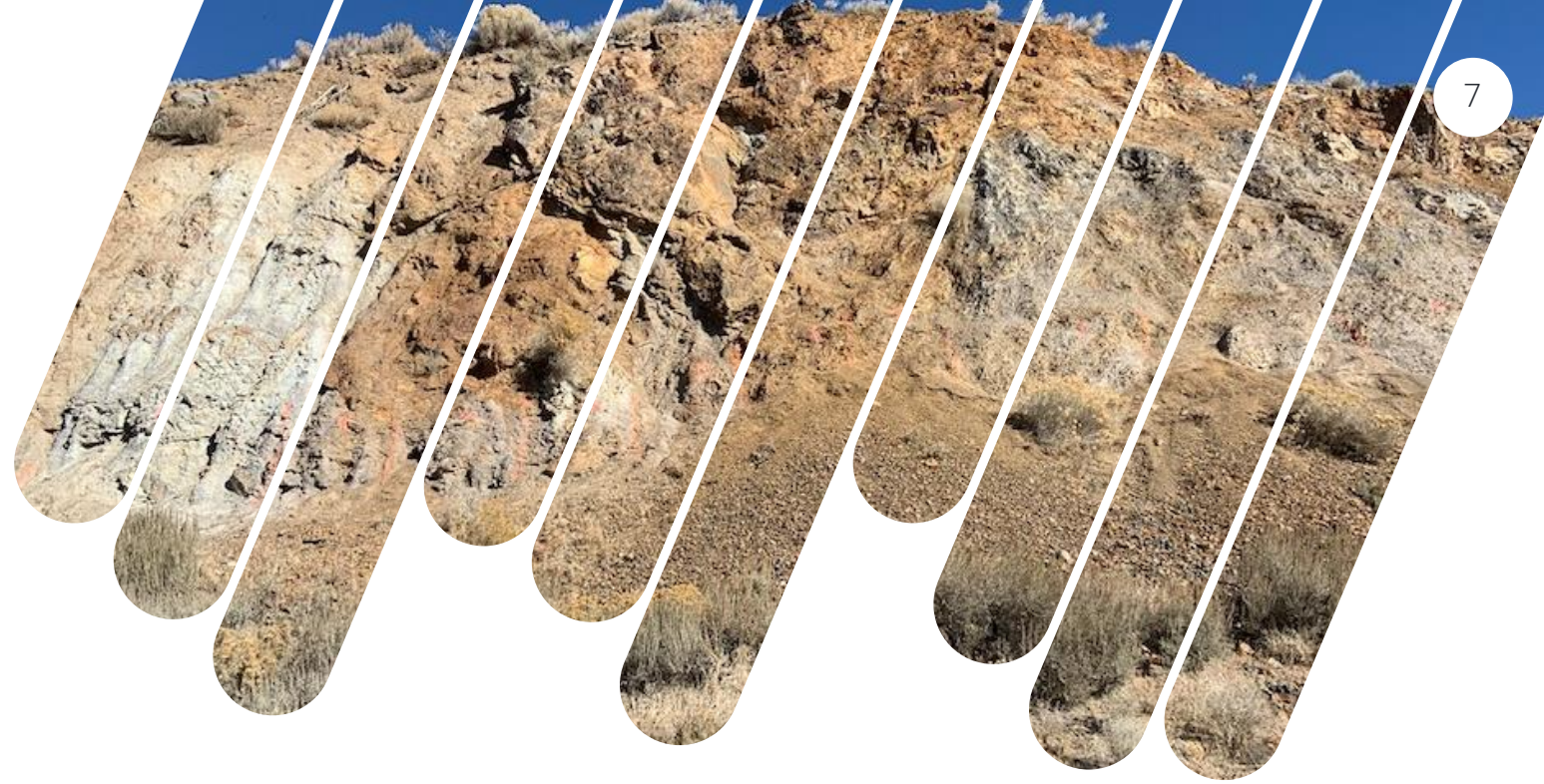
OUR PROJECTS

Swift

75 km² Land Package

High-Grade Underground Au Target

VERIFY
[Click Here](#)



NGM EARN-IN

US\$20M earn-in agreement signed with Nevada Gold Mines (NGM) ([09-22-2021 PR](#))



FULLY PERMITTED

17.0+ acres of fully bonded Federal and State level exploration permits



DRILLING IN 2020

3,000m Phase I drill program intersected the Wenban formation (Cortez district host rocks)



STRATEGIC LAND PACKAGE

District-scale land package ~7km NW of the Nevada Gold Mines owned Pipeline, Cortez Hills, Goldrush and Fourmile deposits⁽¹⁾



DEAL TERMS

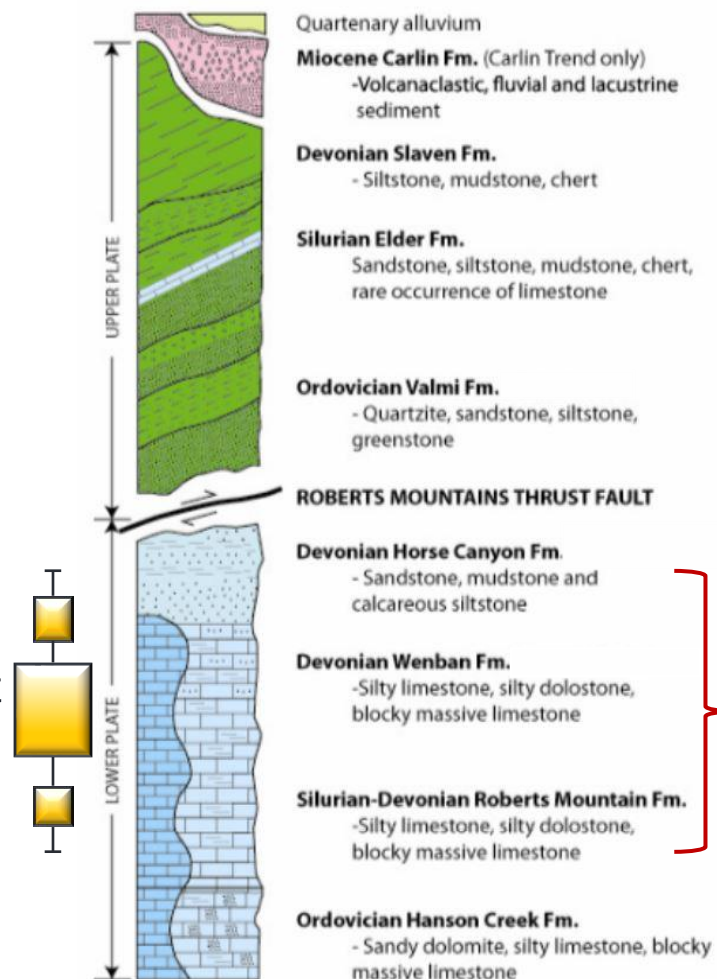
Nevada Gold Mines Earn-In

- Partnering with NGM at Swift eliminates the high exploration risk and cost associated with deep drilling
- Deal structure provides Ridgeline with exposure to Swift across all levels of project development with zero dilution
- Validates team's belief that Swift represents a Tier-1 discovery opportunity



SWIFT

Cortez District Stratigraphy



Swift
Host Rocks

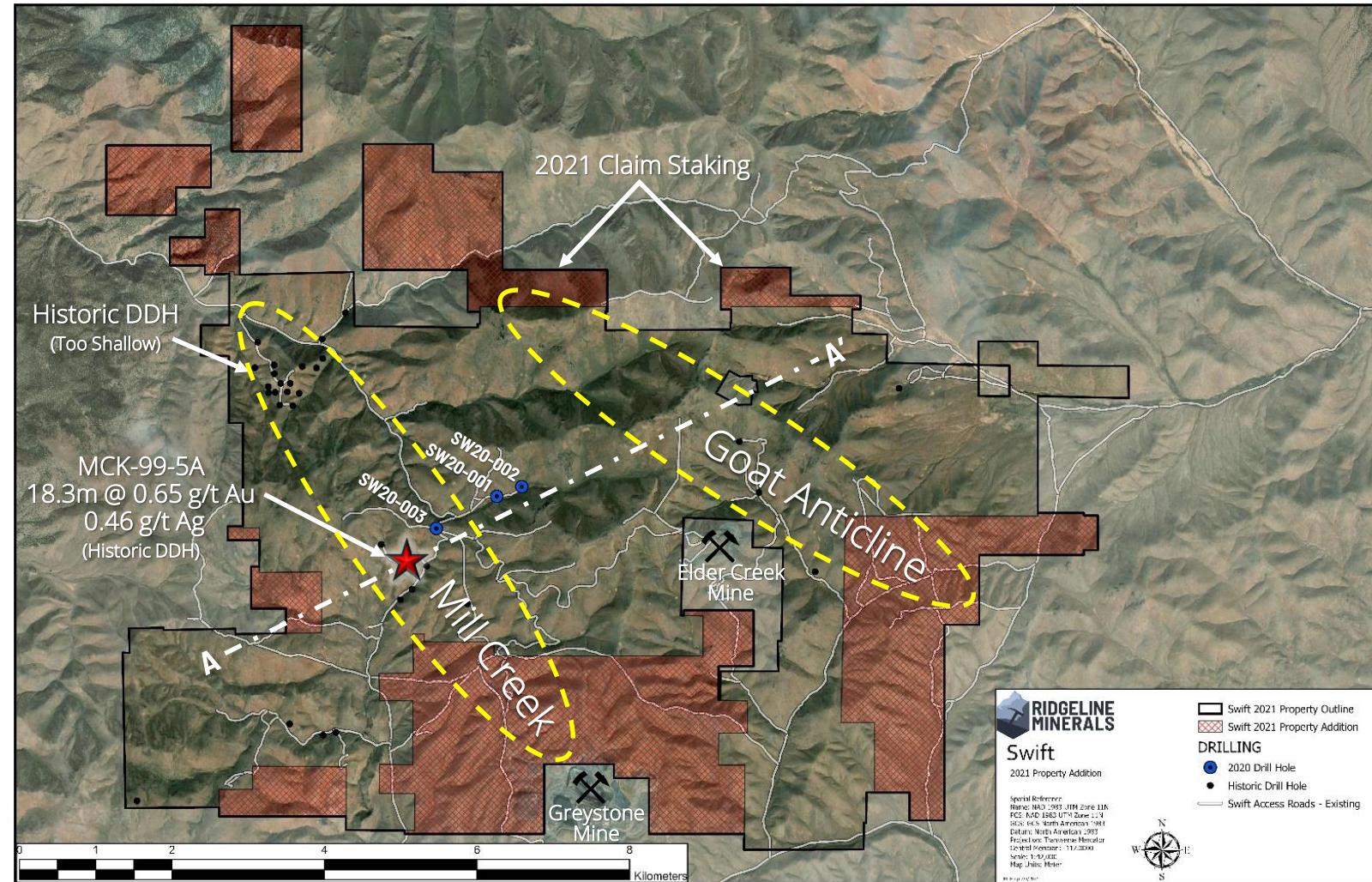


SWIFT

District-Scale

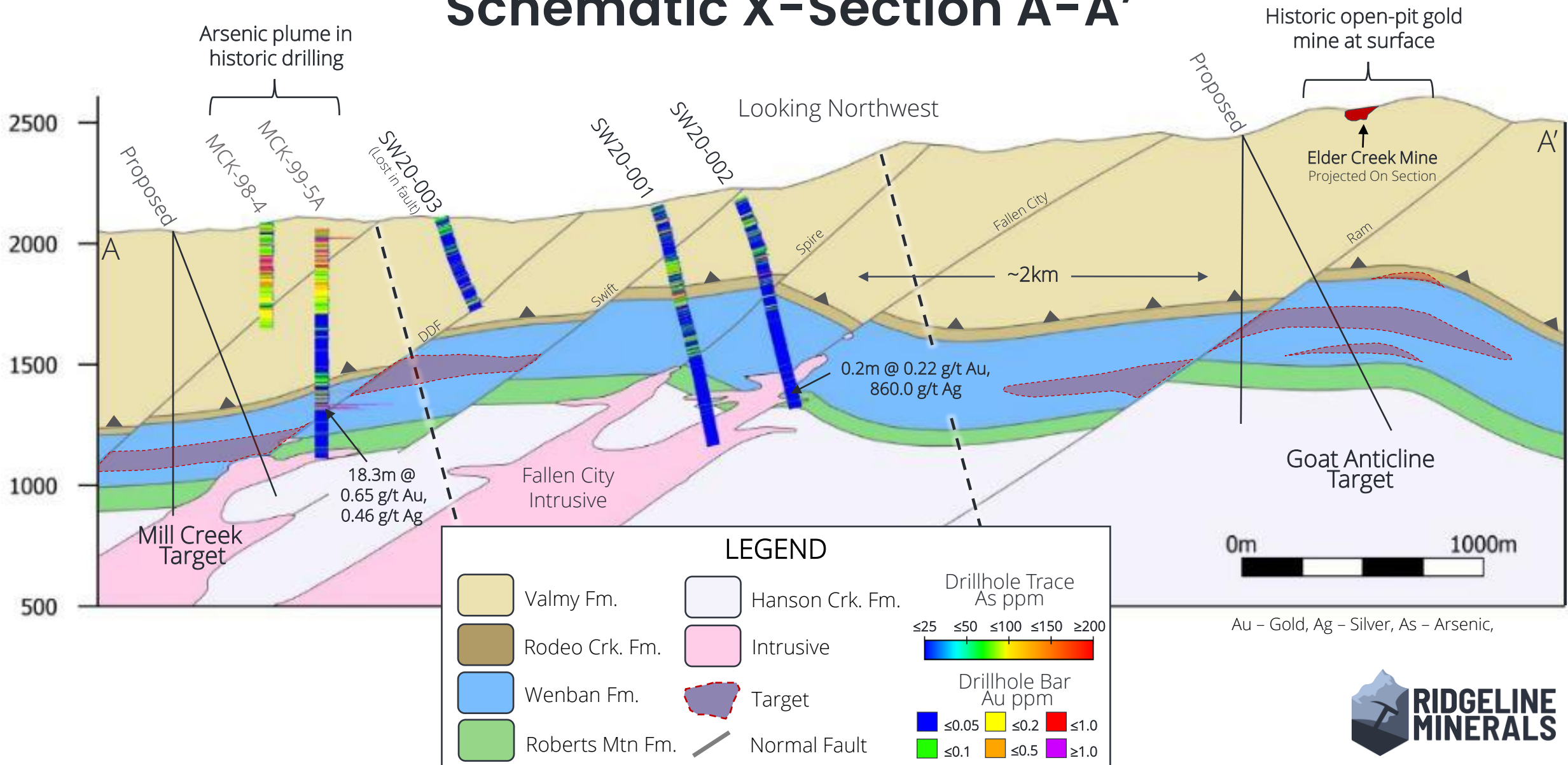
75km² Land Package

- The drilling of the Wenban Formation in 2020 was a significant technical milestone for the company
 - Every >5.0 million ounce gold deposit in the Cortez District is hosted in Wenban Formation host rocks
- US\$20M earn-in agreement with Nevada Gold Mines will aggressively advance the project with zero dilution to Ridgeline shareholders



SWIFT

Schematic X-Section A-A'



OUR PROJECTS

Selena

39 km² Land Package

Oxide Open-Pit Ag-Au ± Pb-Zn

VERIFY

[Click Here](#)



100% OWNED

100% owned⁽⁵⁾ land package.
12km southeast of Bald Mountain Mine (Kinross) -
150k Au oz./yr.



PERMITTING

5.0 acre BLM Notice of Intent approved and fully bonded with 200 acre Plan of Operations permit pending



DRILLING IN 2021

Phase IV drill program (3,445m) completed in June 2021 to expand shallow-oxide, silver-gold discovery



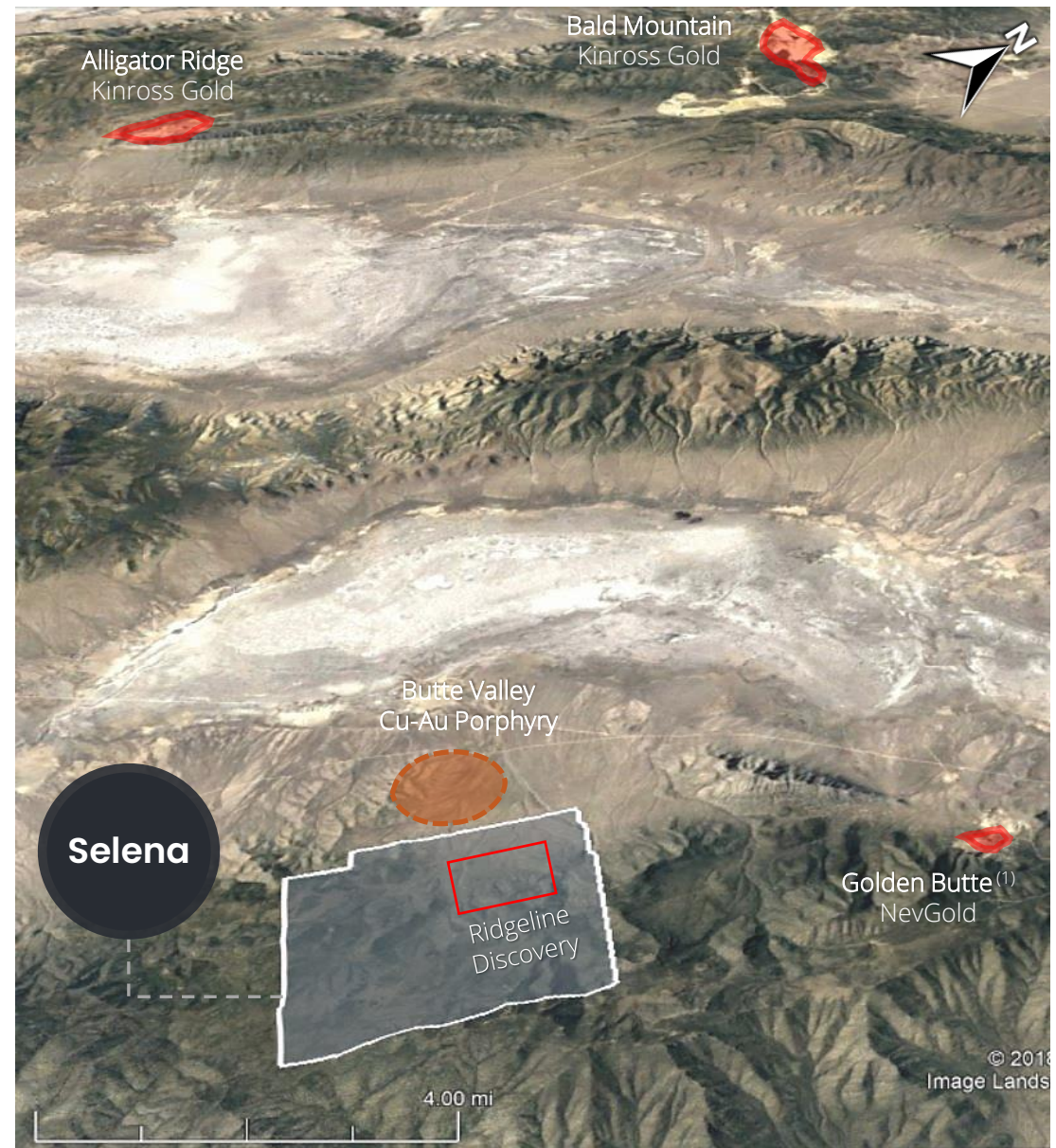
NEW DISCOVERY

2021 drilling returned up to 44.2m grading 123.2 g/t Ag, 0.1 g/t Au, 1.5% Pb, 0.6% Zn⁽²⁾

SELENA

District-Scale Potential

- 39km² contiguous land package in the historic Limousine Butte mining district
- Same host rocks as multiple 1+ million-ounce open-pit mines in the area including the Kinross Gold owned Bald Mountain and Alligator Ridge deposits
- Ridgelines 2021 drill program intersected the outer margins of a Ag-Au-Pb-Zn carbonate replacement deposit (CRD) system including:
 - 4.6m @ 421 g/t Ag, 0.6 g/t Au, 4.4% Pb, 3.7% Zn in SE21-024

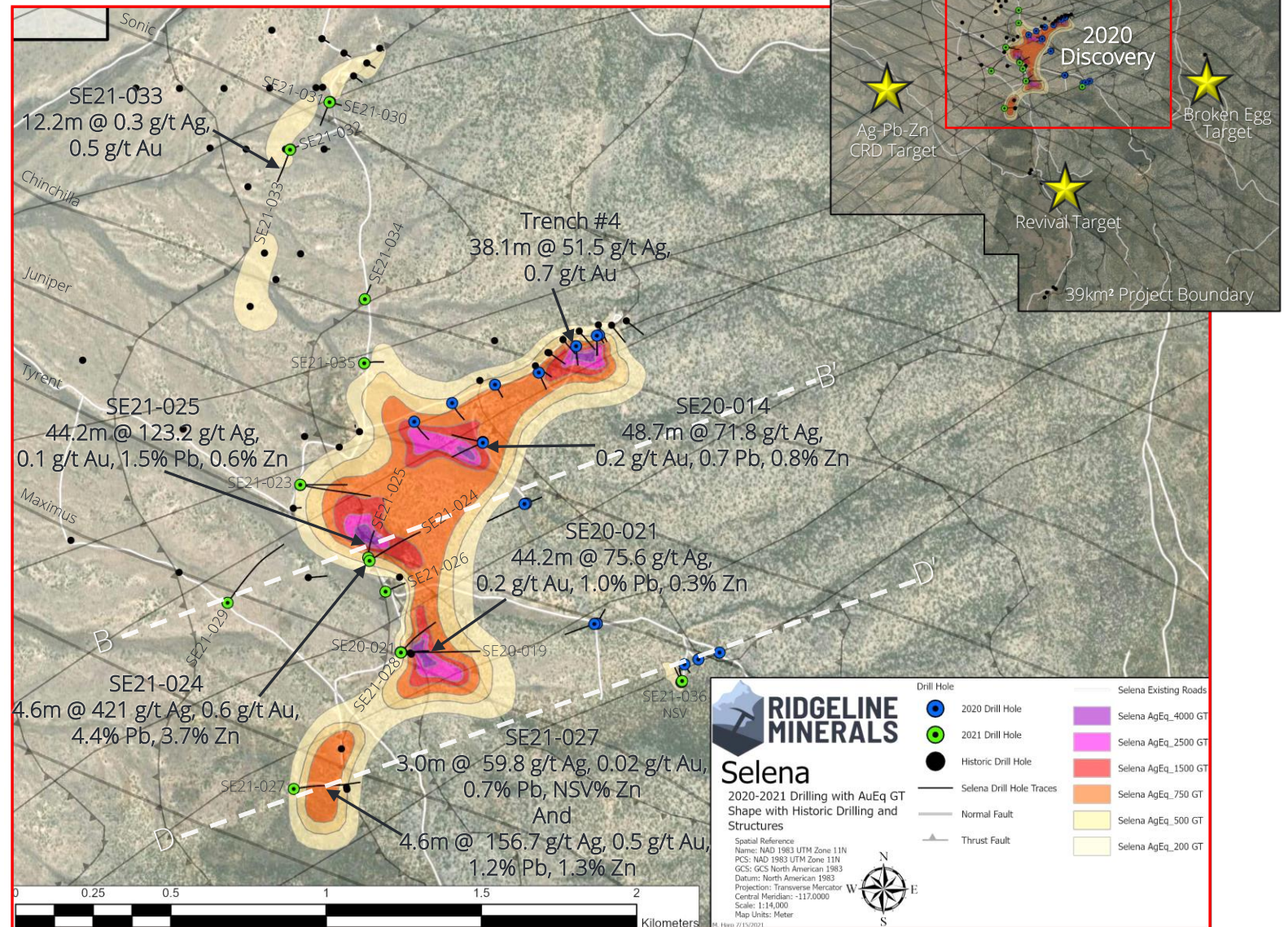


SELENA

2021 Drilling

- 14 Reverse Circulation (RC) holes totaling 3,445m
- Drilling confirmed high-grade mineralized centers at structural intersections with northwest trending "feeder" faults
- Higher-grade CRD type polymetallic hits are tight to "feeder" fault zones and increasing in grade at depth

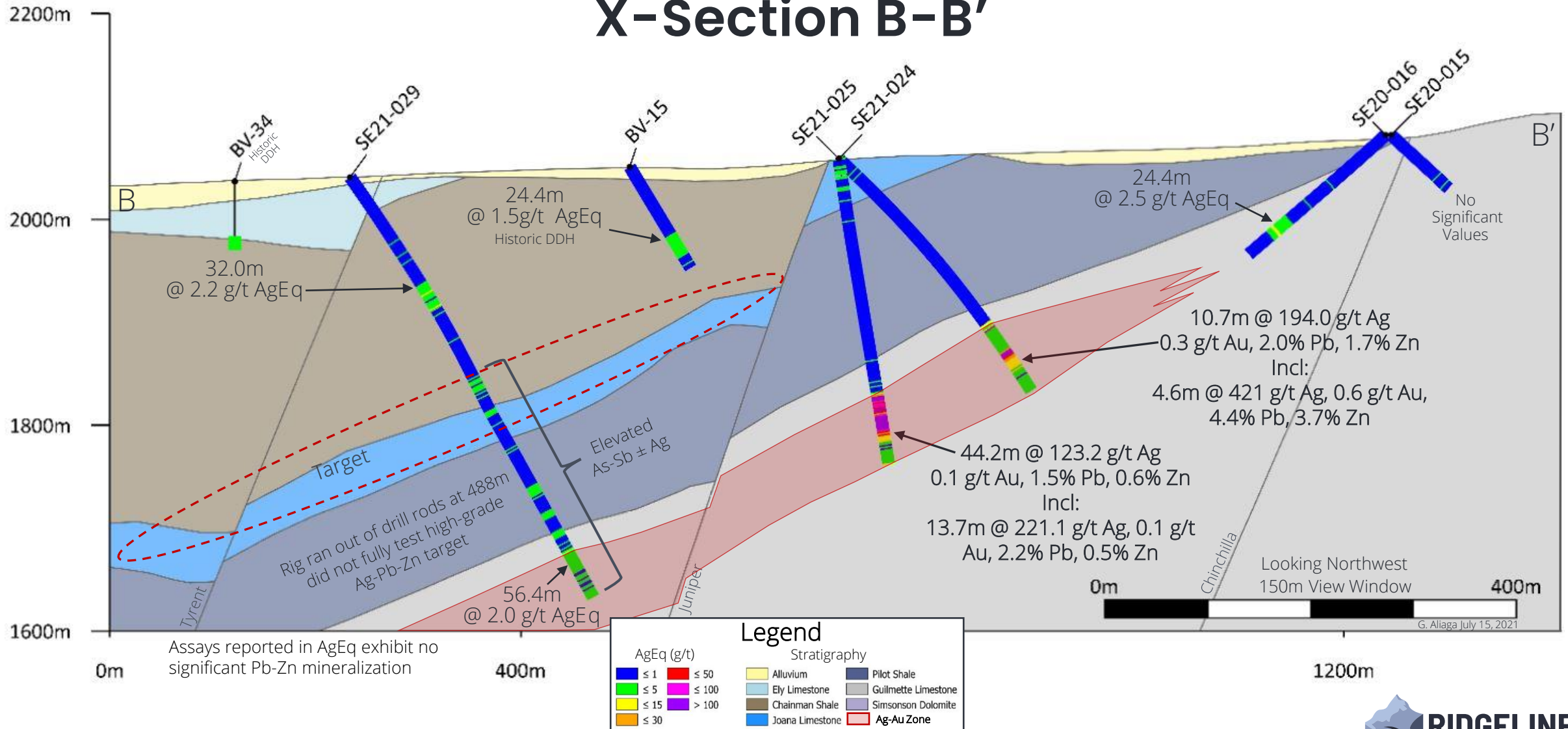
Silver Equivalent Grade Thickness Map



Grade Thickness = AgEq * Intercept Thickness (m) AgEq = Ag + (Au * 72), no recovery factor applied
Pb-Zn values not included in AgEq calculation

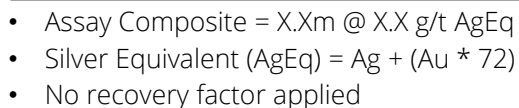
SELENA

X-Section B-B'



- Assay Composite = X.Xm @ X.X g/t AgEq
- Silver Equivalent (AgEq) = Ag + (Au * 72)
- No recovery factor applied

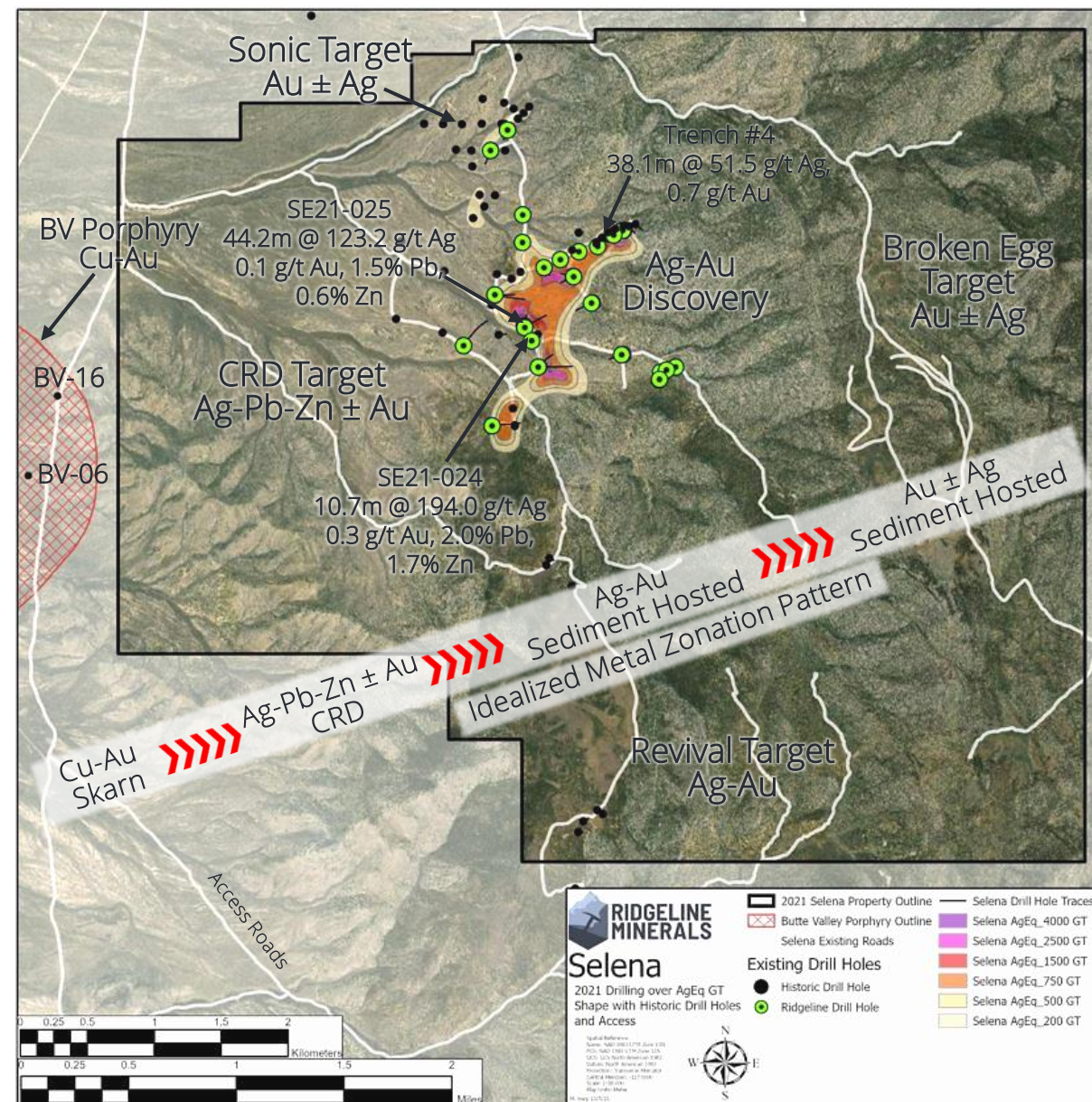
- Drill hole SE21-027 hit Ag-Au-Pb-Zn in two host horizons with a 1.2km down-dip step-out from SE20-010



SELENA

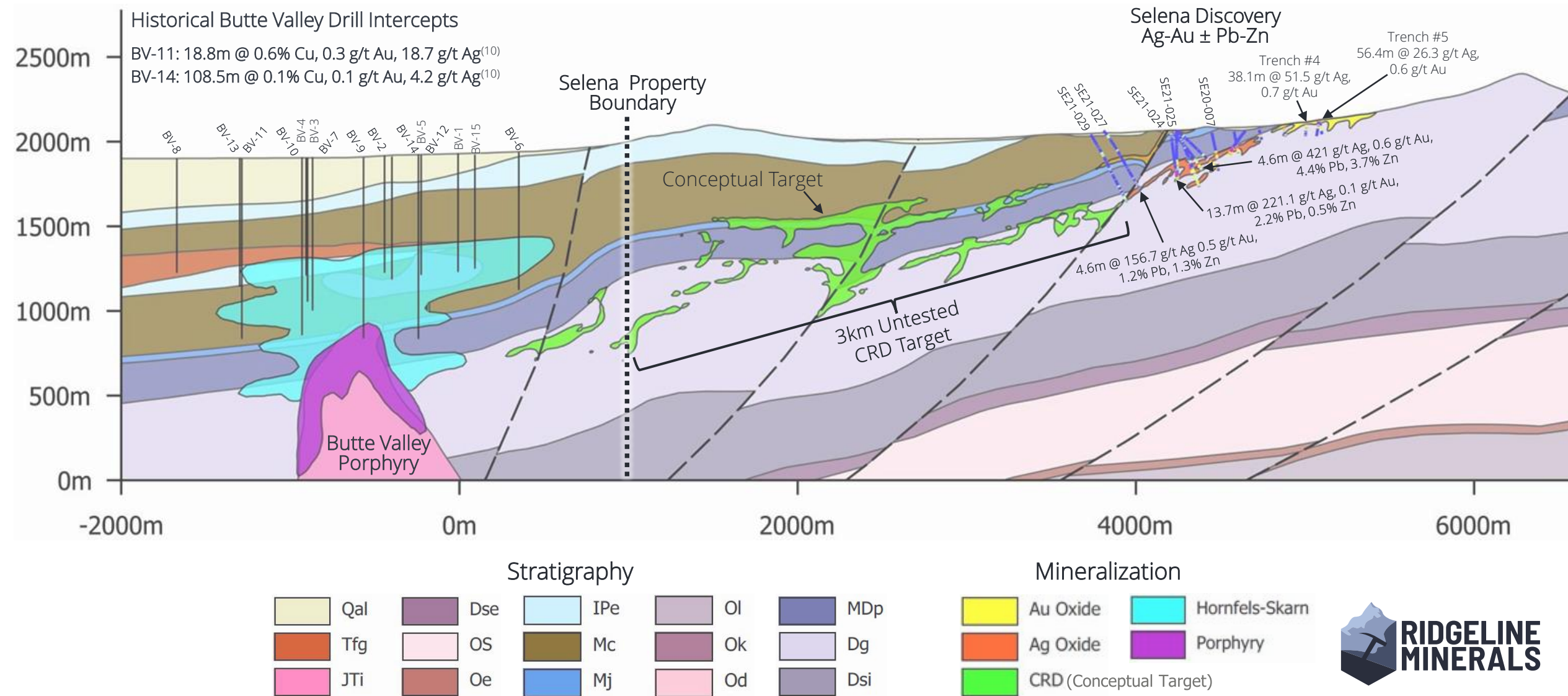
Evolving Geologic Model

- Mineralization at Selena exhibits porphyry/CRD zonation characteristics with Ridgeline drilling to date defining:
 - 2020 - Shallow-oxide, sediment hosted Ag-Au mineralization located at original discovery
 - 2021 - Carbonate replacement (CRD) type Ag-Pb-Zn-Au mineralization in SE21-024, SE21-025, & SE21-027
- Potential to make a “blind” CRD discovery with 3km of untested strike between the outcropping Selena discovery and the Butte Valley Porphyry



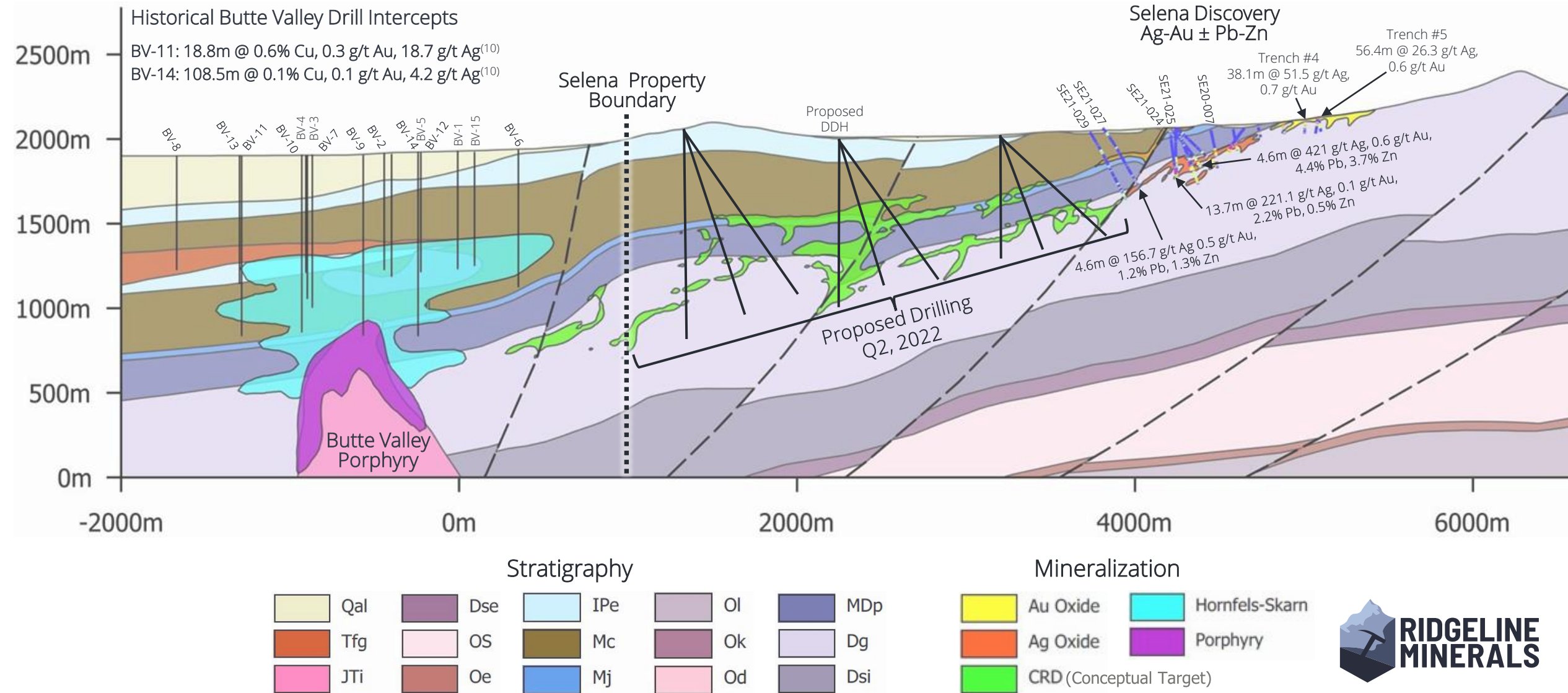
SELENA

Conceptual CRD Target



SELENA

Proposed 2022 Drill Program



The geological comparison to the Taylor deposit is preliminary in nature and should be considered conceptual until thoroughly drill-tested with the Company's proposed 2022 drill program

SELENA

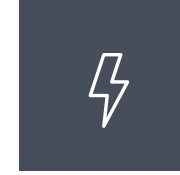
Timeline To Discovery

**Q4 2021**

- Soil sampling grid over CRD Target
- Field mapping & 3D modelling

**Q1 2022**

- IP & Magnetics geophysics
- Amend NOI drill permit

**Q2 2022**

- 10-hole drill program (~6,000m)

Upside Potential

- Ridgeline's 2021 drill program suggests Selena has the potential scale and grade to host a large Ag-Au-Pb-Zn Carbonate Replacement Deposit (CRD)
 - Potential analogues include South32 Mining's Taylor-Hermosa deposit in Arizona
- Q2, 2022 drill program will test multiple host horizons across a 3+km strike length between the known CRD type mineralization at Selena and the proven Cu-Au-Ag mineralization at the Butte Valley porphyry

OUR PROJECTS

Carlin-East

35 km² Carlin Trend Land Package

High-Grade Underground Au Target

VERIFY
Click Here



100% OWNED

100% owned land package in the heart of the Carlin Trend
Carlin-East (BLM Claims)



PERMITTING

Fully Permitted and bonded
5.0 acre BLM Notice of Intent
exploration permit



DRILLING IN 2021

Drill program (2,272m)
complete (assays pending)
at Crash Zone Target



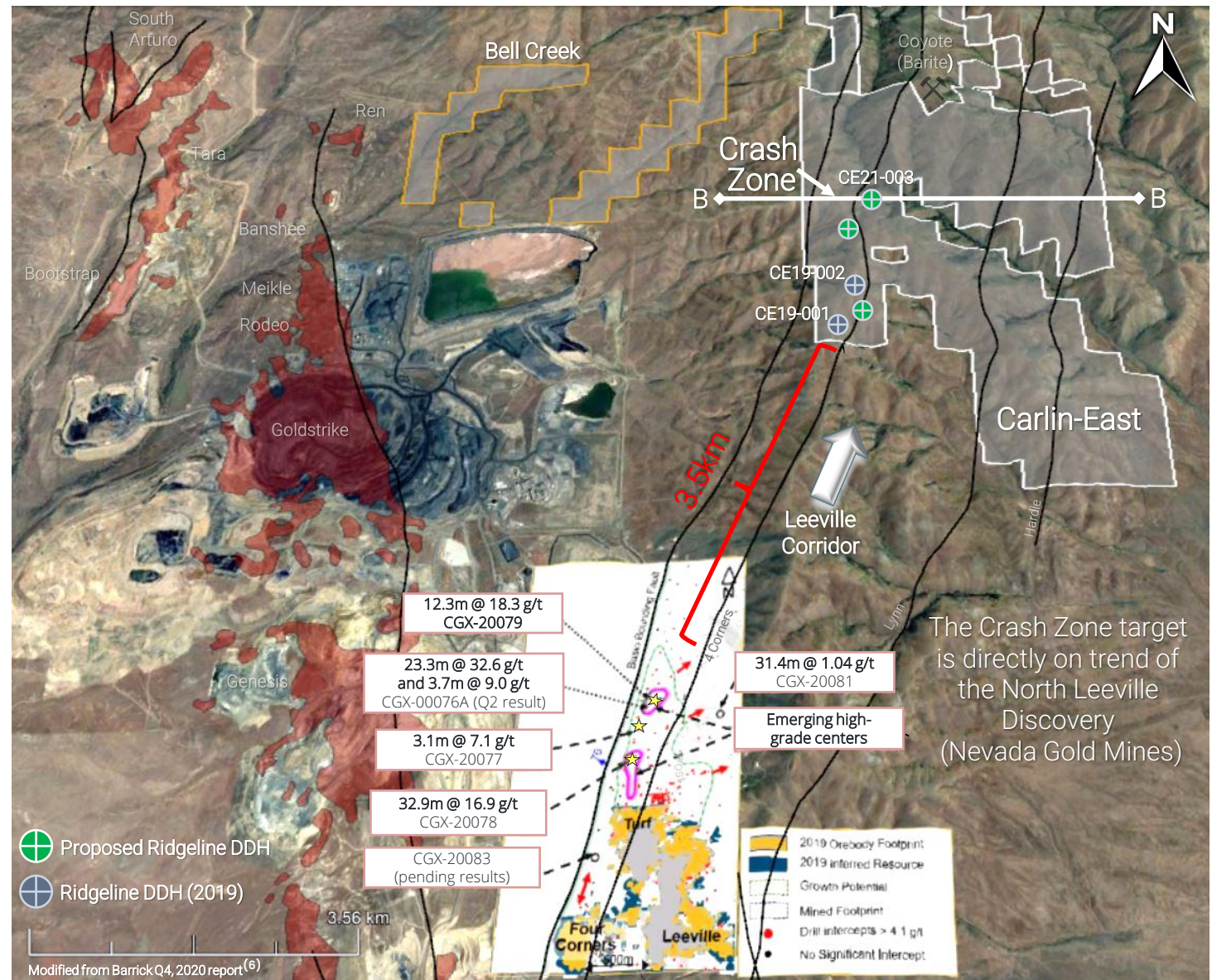
STRATEGIC LAND POSITION

On-strike of the NGM owned Leeville mine⁽¹⁾
and the North Leeville Discovery: 23.3m @
32.6 g/t Au in CGX-00076A⁽⁶⁾

CARLIN-EAST

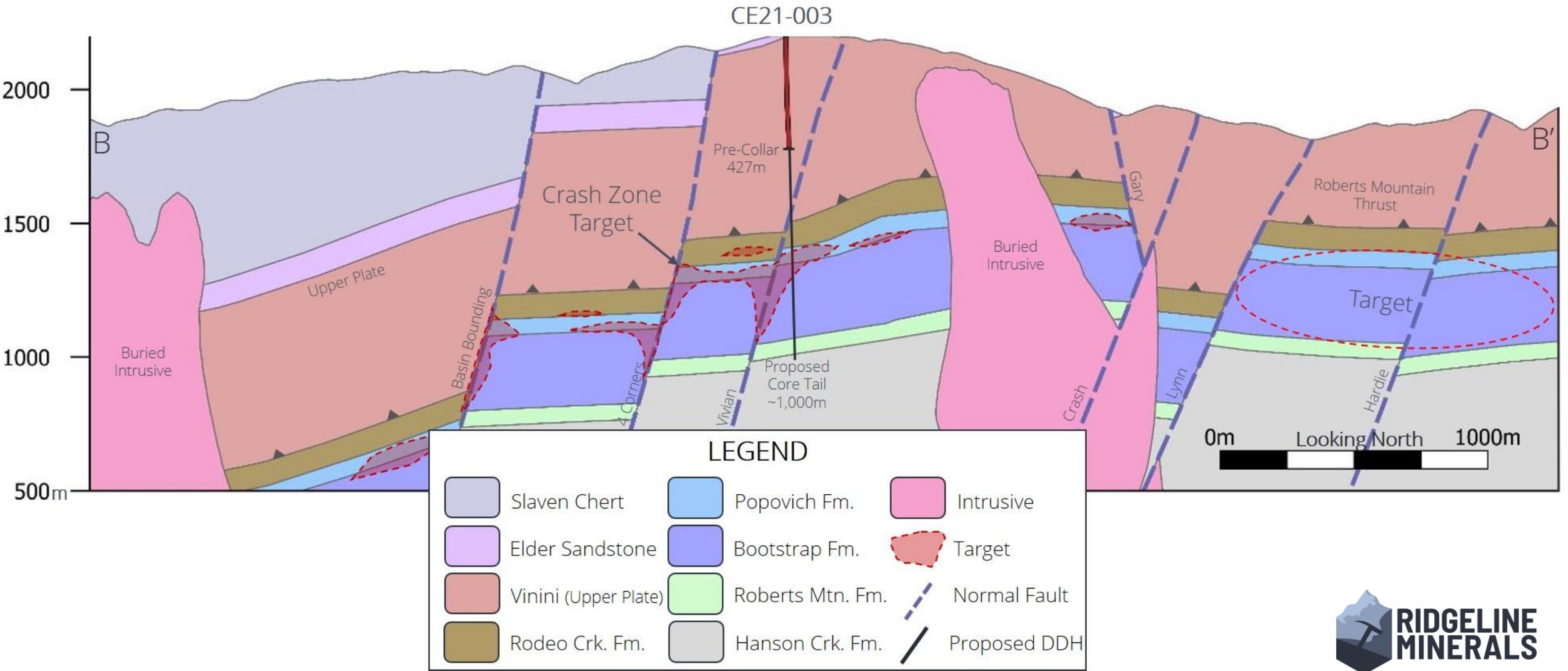
Strategic Location

- ~4.5km north of and on-strike of the Nevada Gold Mines operated Leeville-Turf mine⁽¹⁾
- ~3.5km north of the North Leeville discovery (announced Q2, 2020)
 - 23.3m @ 32.6 g/t Au in CGX-00076A starting at 827m⁽⁶⁾
 - 32.9m @ 16.9 g/t Au in CGX-20078⁽⁶⁾
- North Leeville discovery is now listed a top priority exploration development asset at NGM with multi-million-ounce growth potential ⁽⁶⁾



CARLIN-EAST

Deep Conceptual Target



OUR PROJECTS

Bell Creek

5 km² Carlin Trend Land Package

High-Grade Underground Au Target

VERIFY

[Click Here](#)



100% OWNED

Lease with option to purchase 100% of the private mineral rights



PERMITTING

Executed surface access agreement with Nevada Gold Mines – May 2021



DRILLING IN 2020

Nevada Gold Mines recently drilled Sinkhole Breccia target located ~250m west of property boundary



STRATEGIC LAND POSITION

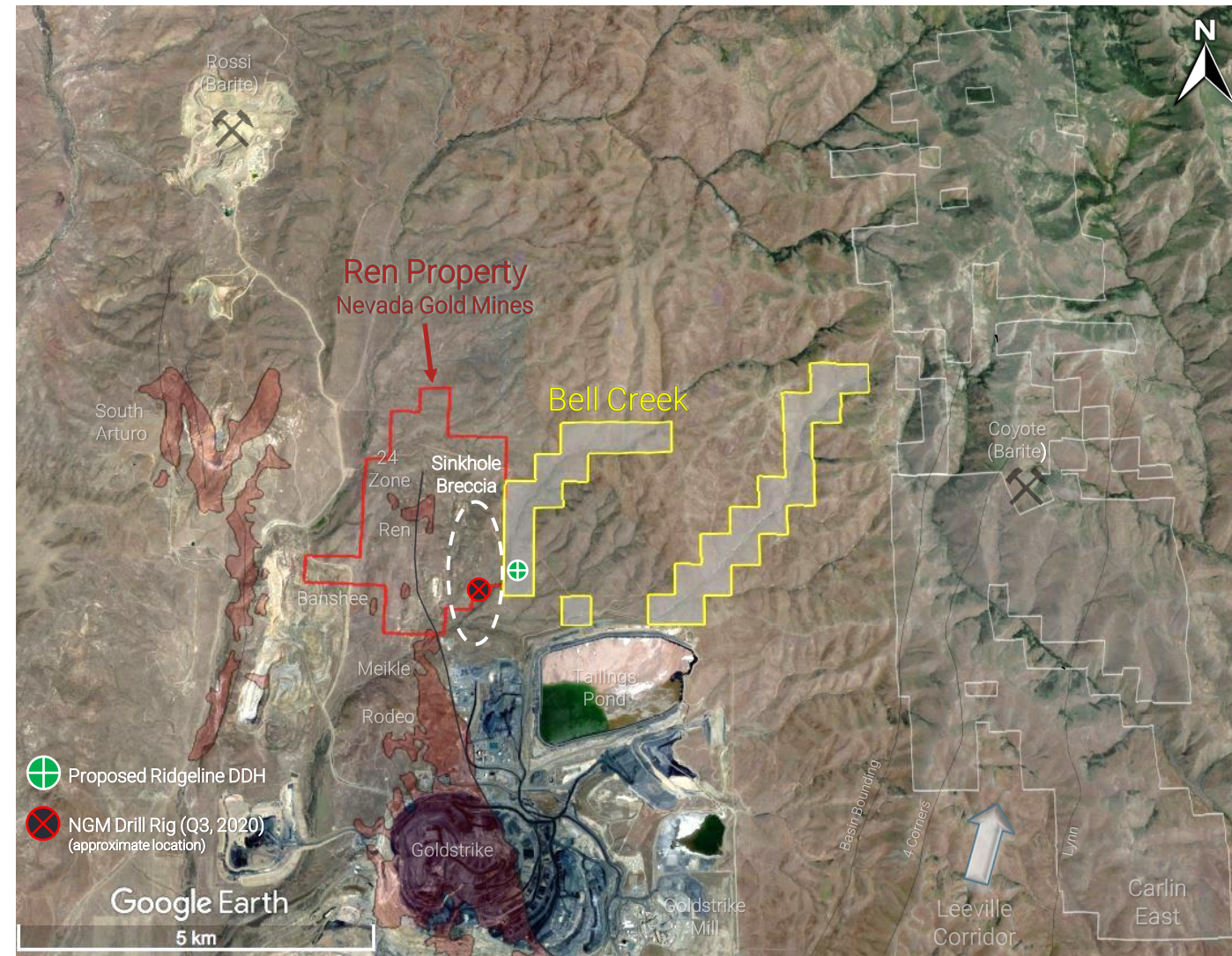
Shared boundary with the Banshee-Ren deposit and adjacent to the Goldstrike and Rodeo-Meikle deposits



BELL CREEK

Strategic Mineral Rights

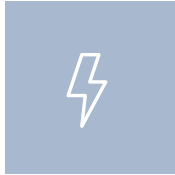
- Nevada Gold Mines (NGM) drilled the Sinkhole Breccia target at the Ren Property in Q3,2020 (drill results not publicly available)
 - Located ~250m west of Bell Creek
- 24 Zone at Ren includes historic intercepts of 42.7m @ 32.6 g/t Au in RU-24C
 - Potential for future discoveries to extend onto Ridgeline ground
- Recent NGM transaction with I-80 Gold to consolidate the South Arturo mine bodes well for continued development of the South Arturo and Ren underground deposits



Source: Modified from Ely Gold Corporate Presentation ⁽⁵⁾

SUMMARY

Near-Term Catalysts

**Q3 2021**

- Swift - \$20M Earn-in with Nevada Gold Mines

**Q4 2021**

- Carlin-East – Drill results
- Selena – Soils & mapping program

Upside Potential

- US\$20M earn-in agreement with Nevada Gold Mines confirms district-scale discovery potential at Swift
 - \$4M guaranteed spending over the first two years ([See 09-22-2021 PR](#))
- Significant growth potential at the Selena shallow-oxide Ag-Au discovery
 - 2021 drilling highlights scale of shallow oxide system as well as high-grade Ag-Pb-Zn-Au (CRD) discovery potential at depth
- Strategic Carlin Trend land positions at Carlin-East and Bell Creek
 - 2021 drill program complete (assays pending) and on trend of North Leeville discovery



RIDGELINE MINERALS

TSX-V: RDG | OTCQB: RDGMF
FRA: OGC0



Chad Peters, P.Geo
President, CEO & Director



866-RDG-NVAU (734-6828) – toll free



info@ridgelineminerals.com



ridgelineminerals.com

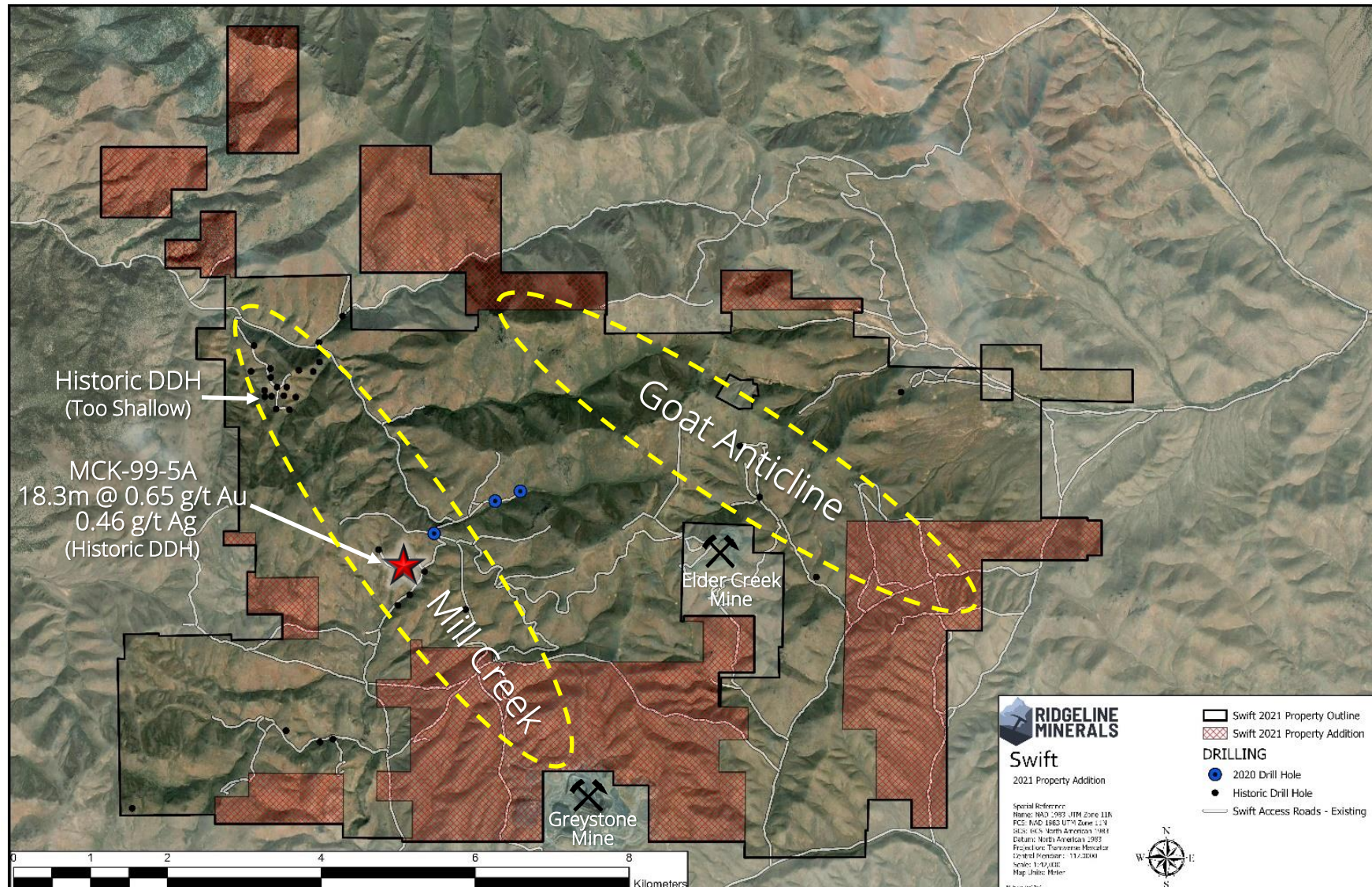


APPENDIX

SWIFT

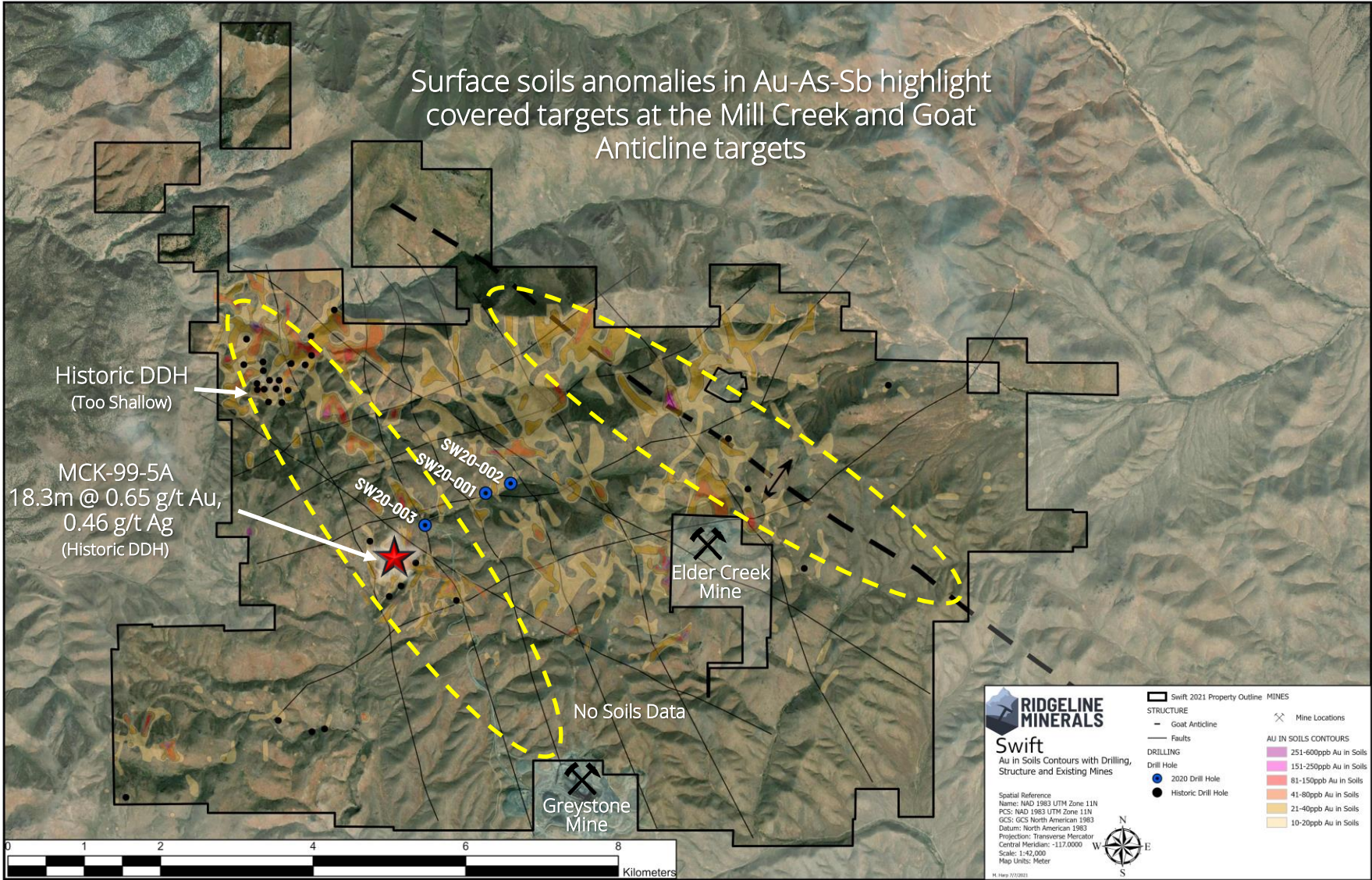
SWIFT

2021 Property Acquisition



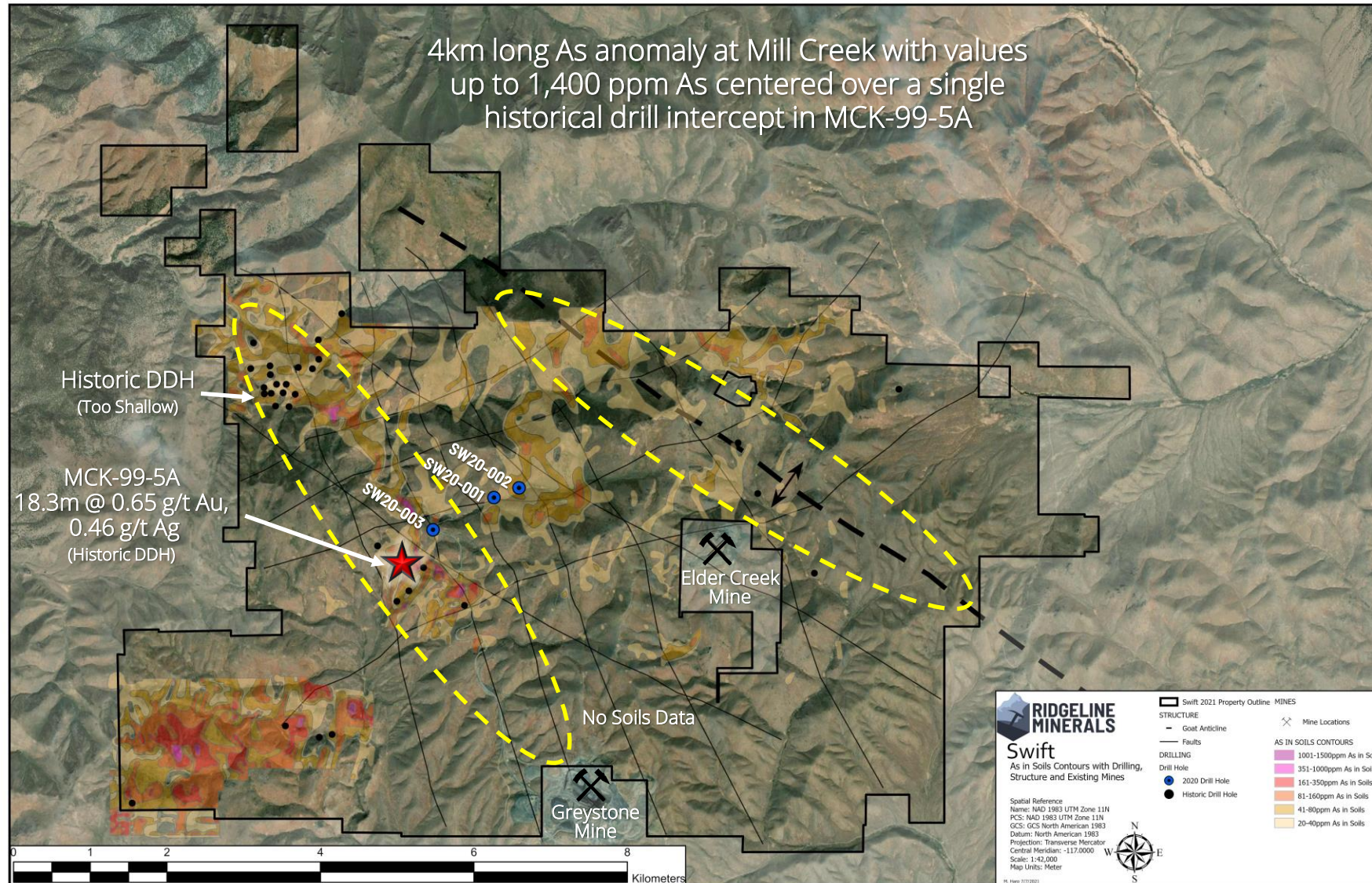
SWIFT

Gold Soils Contours



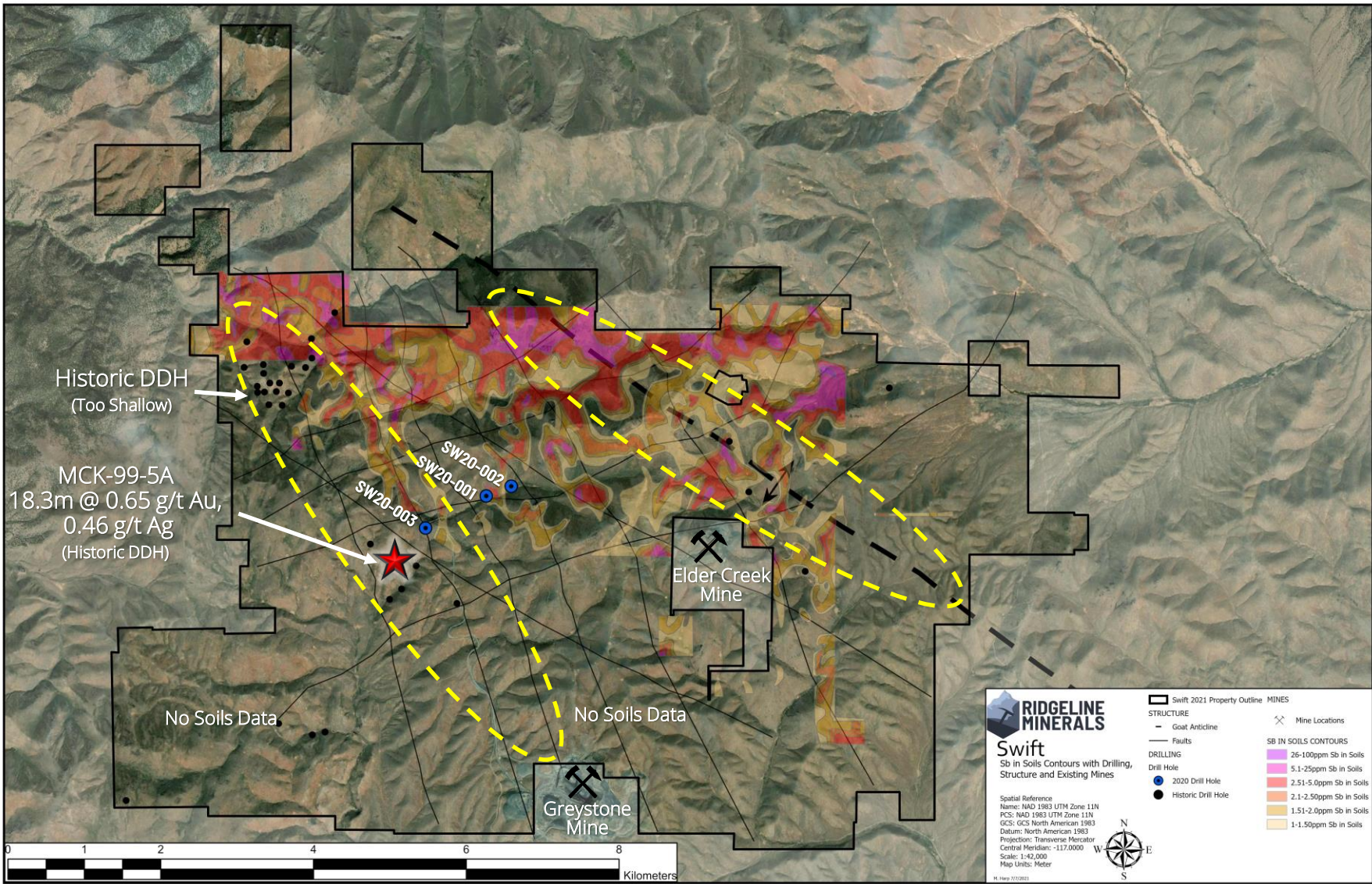
SWIFT

Arsenic Soils Contours



SWIFT

Antimony Soils Contours

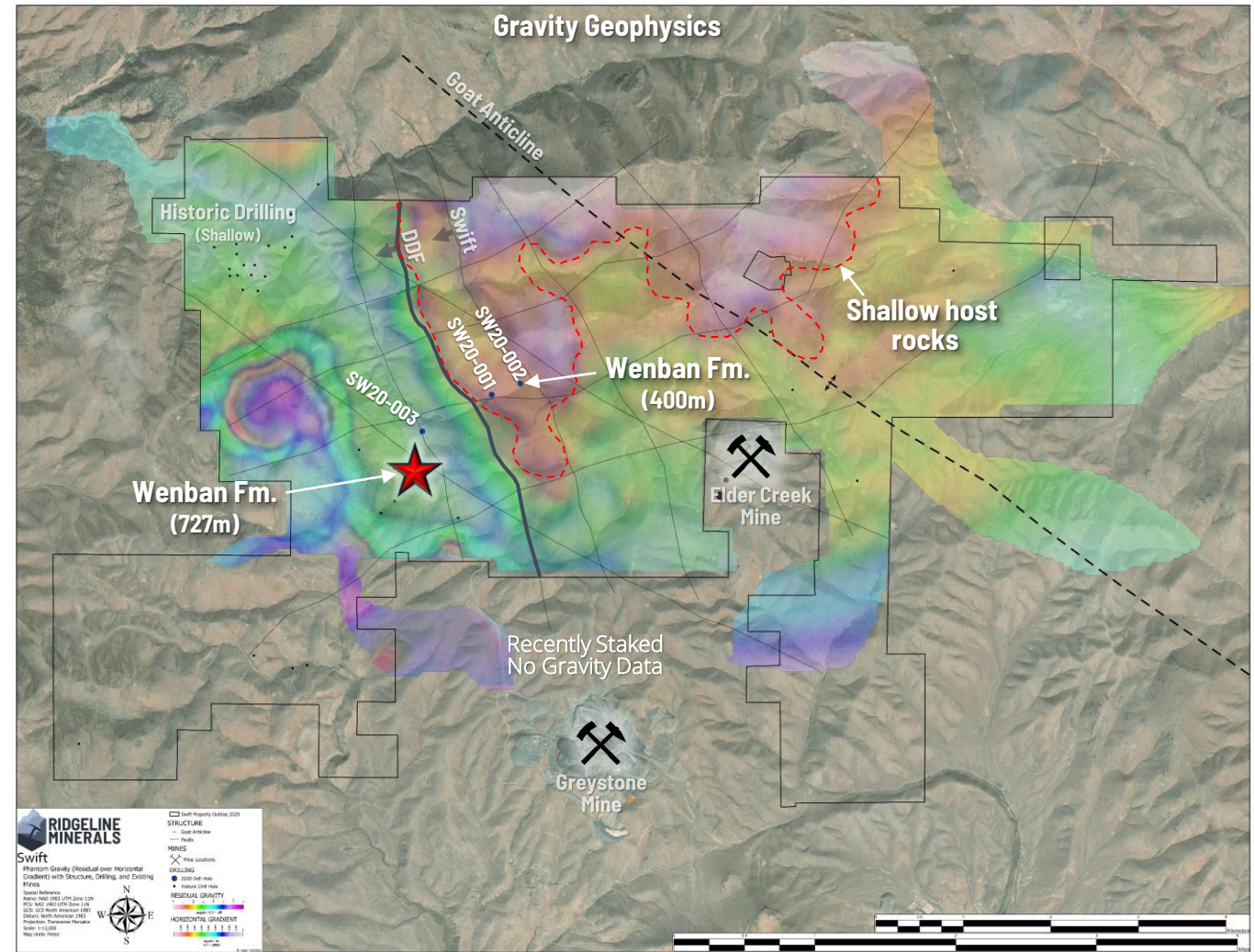


SWIFT

Gravity Geophysics

Residual Layer

- Gravity geophysics highlighted shallow carbonate rocks in previously untested target area
- DDF fault zone is interpreted as a major offsetting structure and fluid conduit
- SW20-001 and SW20-002 intersected thick intercepts of Wenban Formation host rocks for the first time at Swift
- Expanded Gravity survey required to cover recently staked ground



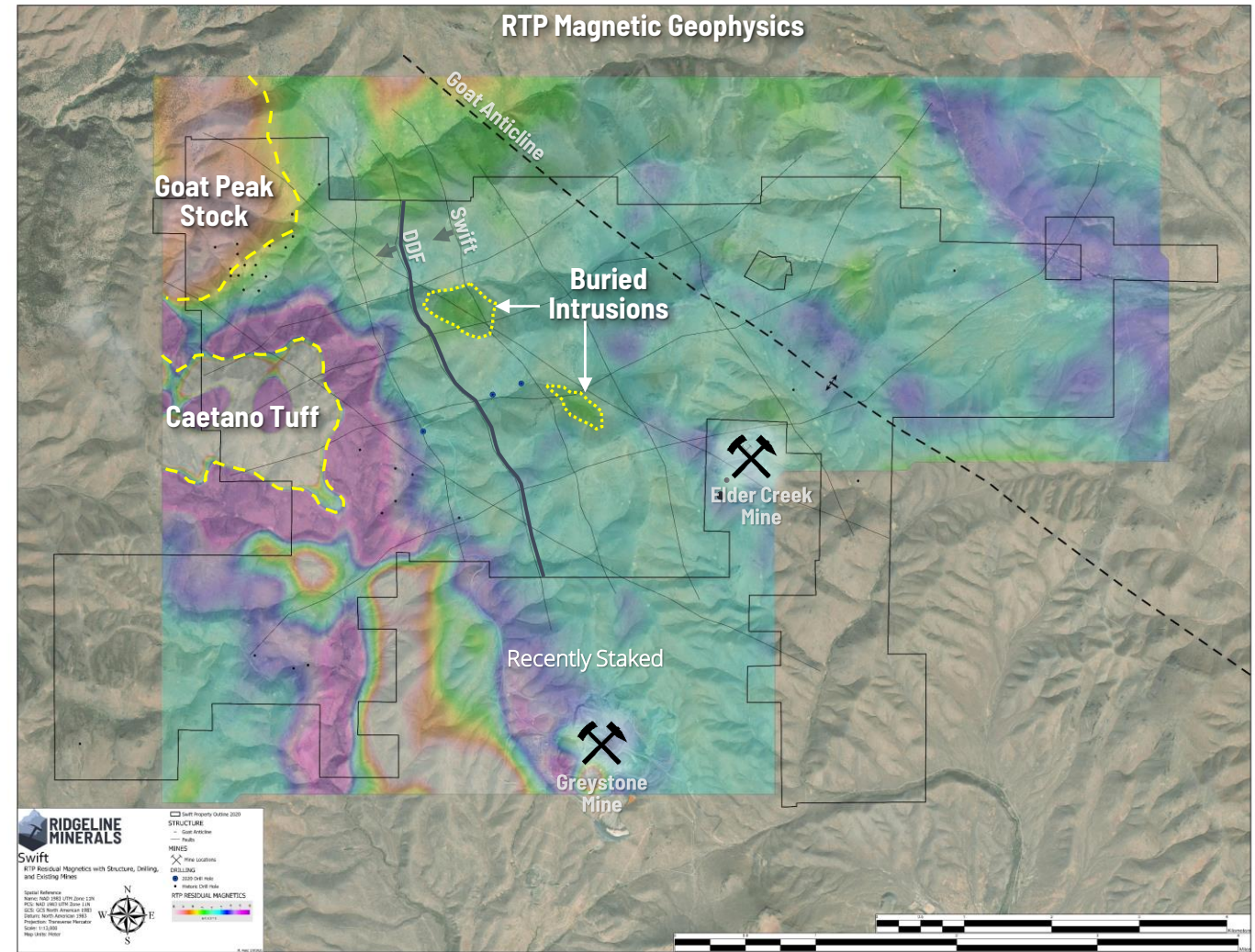
Au – Gold, Ag – Silver, As – Arsenic, Sb – Antimony

SWIFT

PRJ Magnetics

RTP Layer

- Magnetics highlight dike swarms along NW structural corridor
- Property bounded by Goat Peak Stock (Tertiary?) to the NW and Gold Acres Stock (Cretaceous) to the SE
- Large block of Caetano Tuff west of Mill Creek



Au – Gold, Ag – Silver, As – Arsenic, Sb – Antimony

SWIFT

SW20-002 – Wenban

- Wenban 5 debris flow horizon with pervasive hornfelsing and weak to moderate decalcification
- No significant mineralization within altered interval



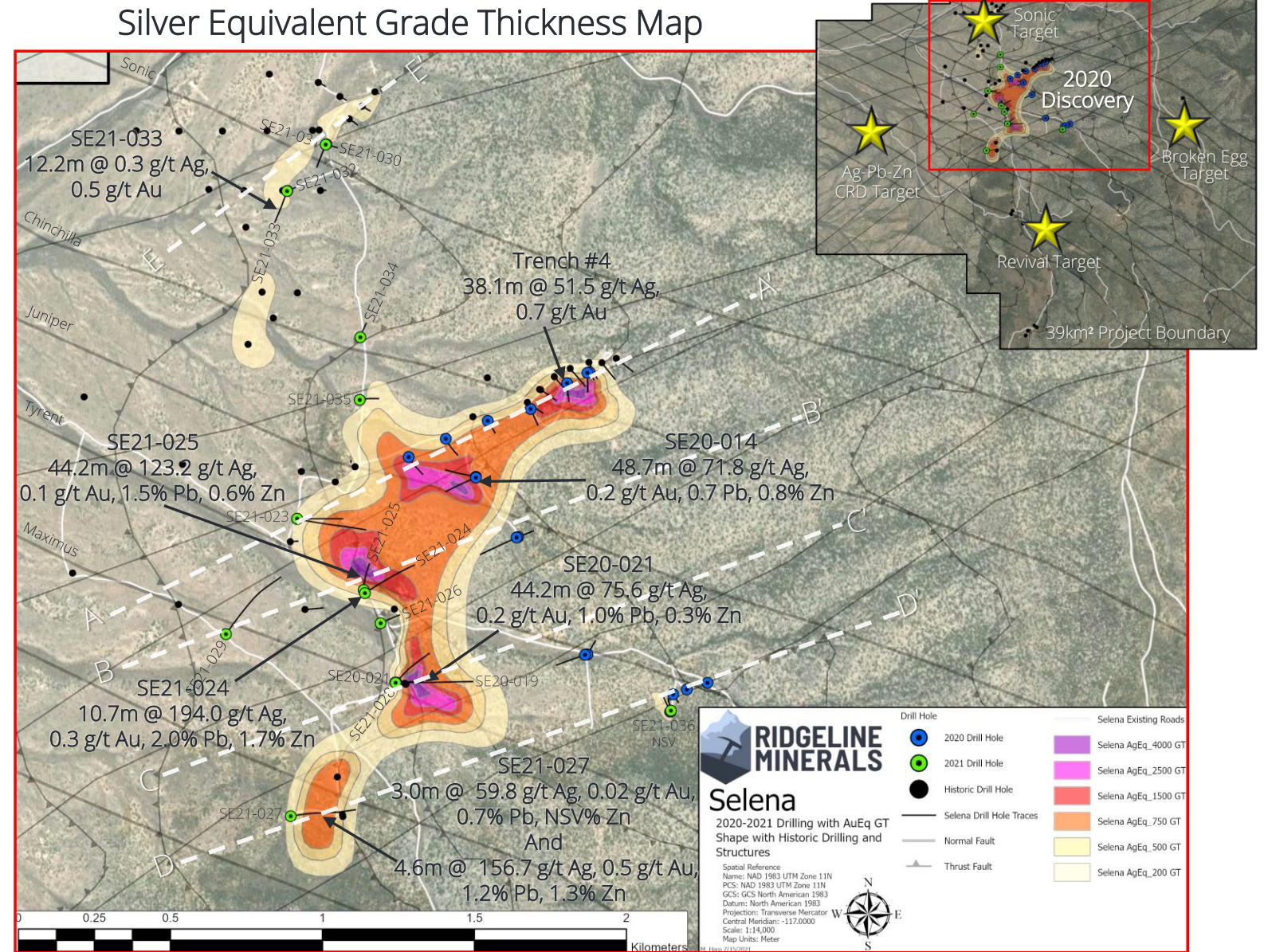
APPENDIX

Selena

SELENA

2021 Drilling

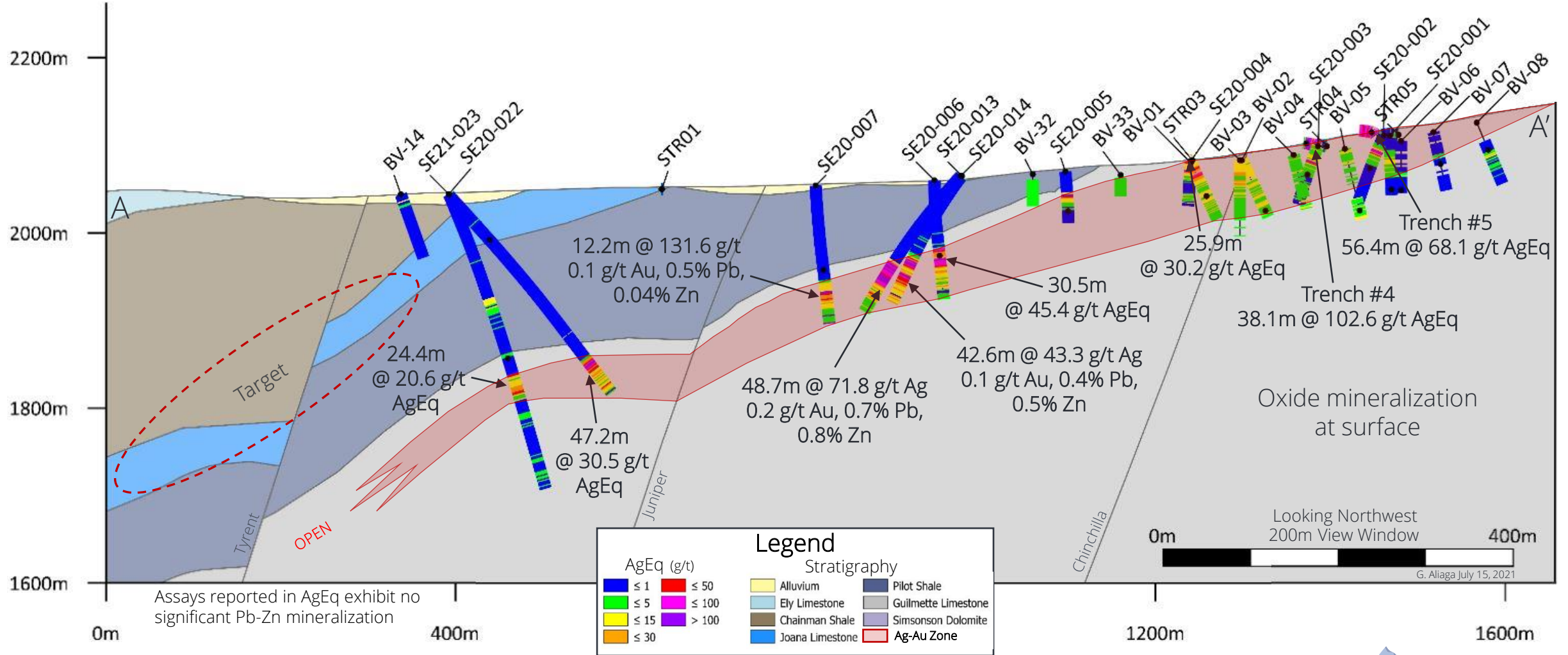
- 14 Reverse Circulation (RC) holes totaling 3,445m
- Drilling confirmed high-grade mineralized centers at structural intersections with northwest trending “feeder” faults
- Higher-grade polymetallic hits are tight to “feeder” fault zones



Grade Thickness = AgEq * Intercept Thickness (m) AgEq = Ag + (Au * 72), no recovery factor applied
Pb-Zn values not included in AgEq calculation

SELENA

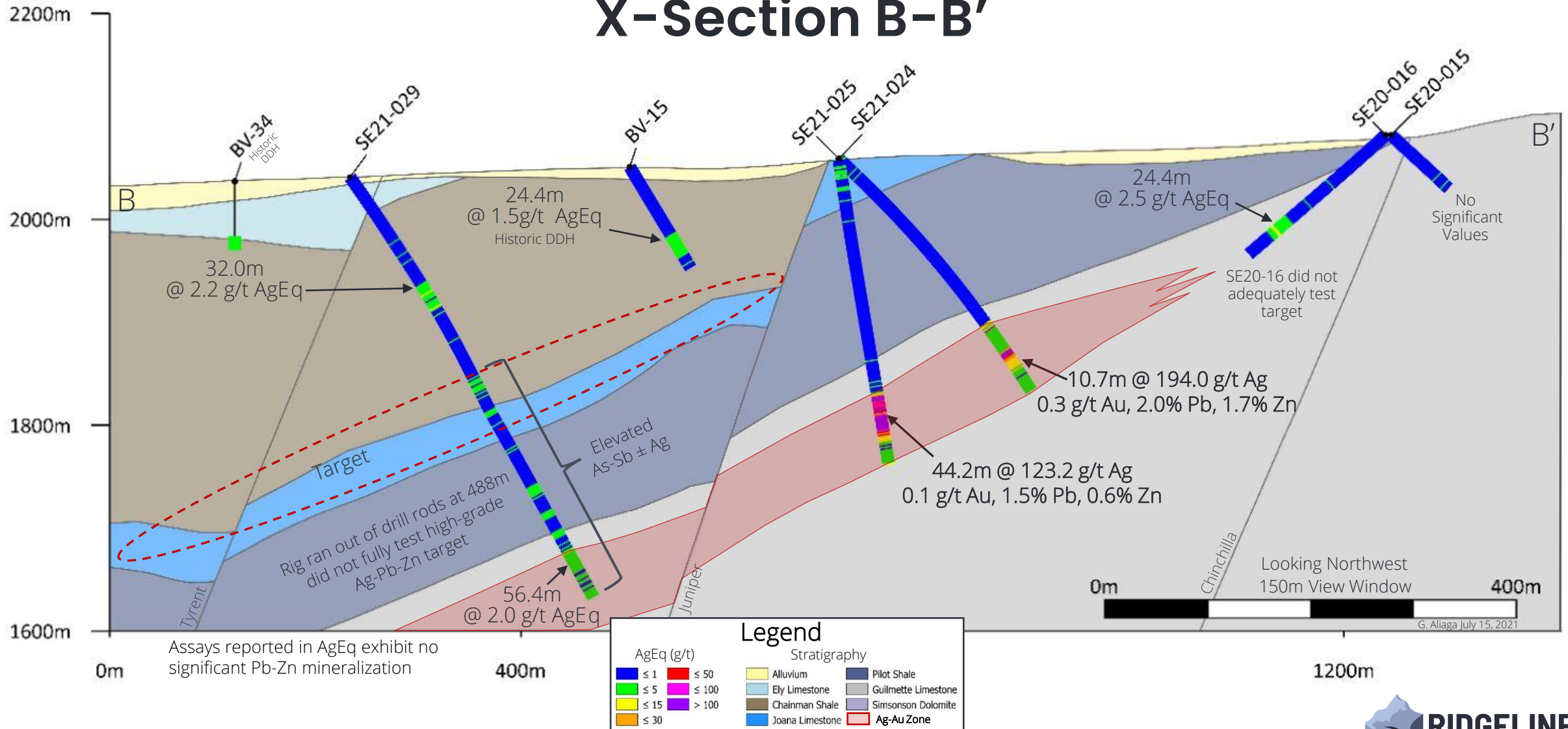
X-Section A-A'



- Assay Composite = X.Xm @ X.X g/t AgEq
- Silver Equivalent (AgEq) = Ag + (Au * 72)
- No recovery factor applied

SELENA

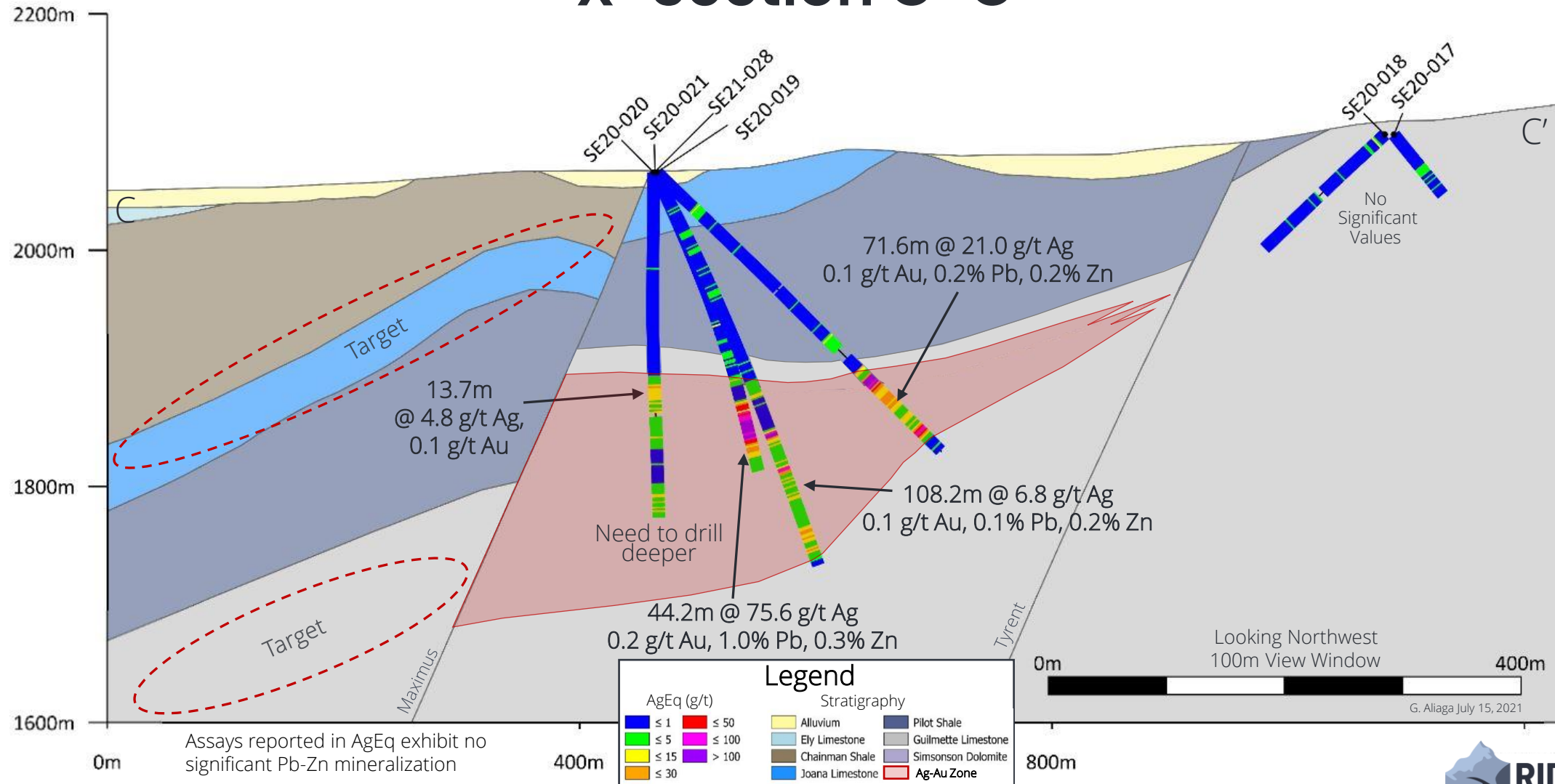
X-Section B-B'



- Assay Composite = X.Xm @ X.X g/t AgEq
- Silver Equivalent (AgEq) = $\text{Ag} + (\text{Au} \times 72)$
- No recovery factor applied

SELENA

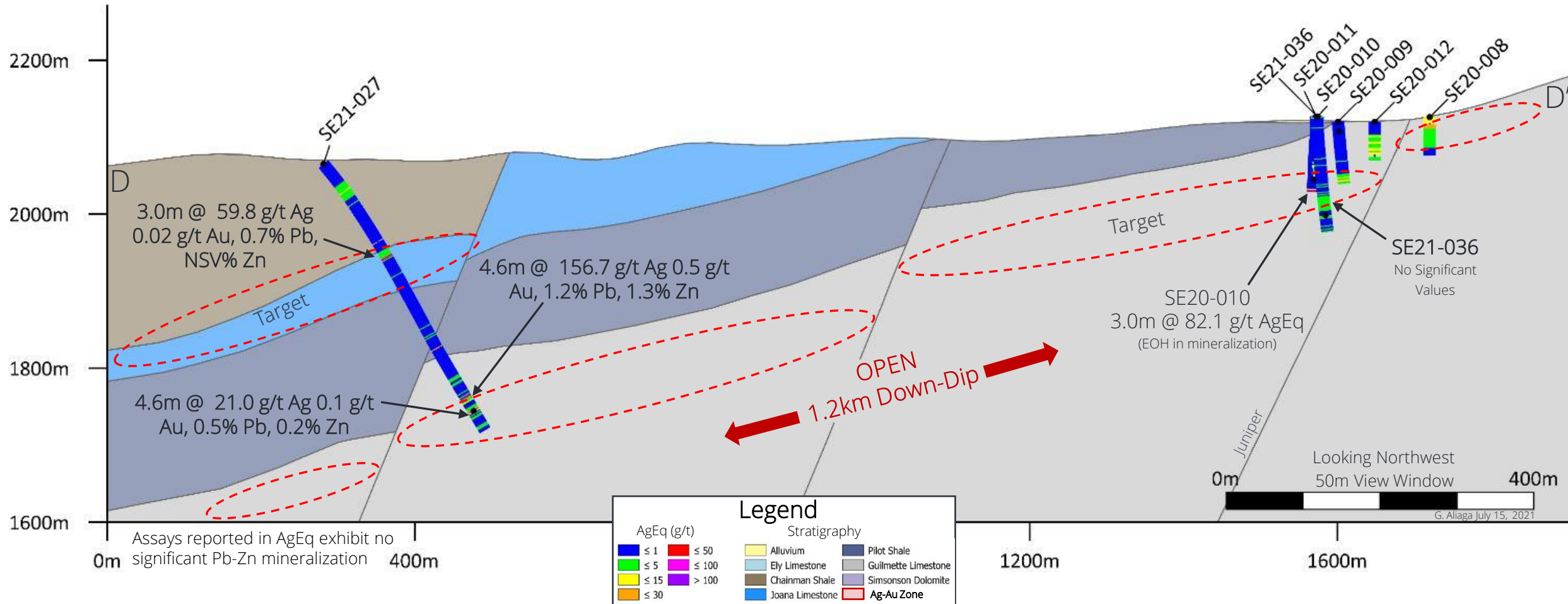
X-Section C-C'



- Assay Composite = X.Xm @ X.X g/t AgEq
- Silver Equivalent (AgEq) = Ag + (Au * 72)
- No recovery factor applied

SELENA

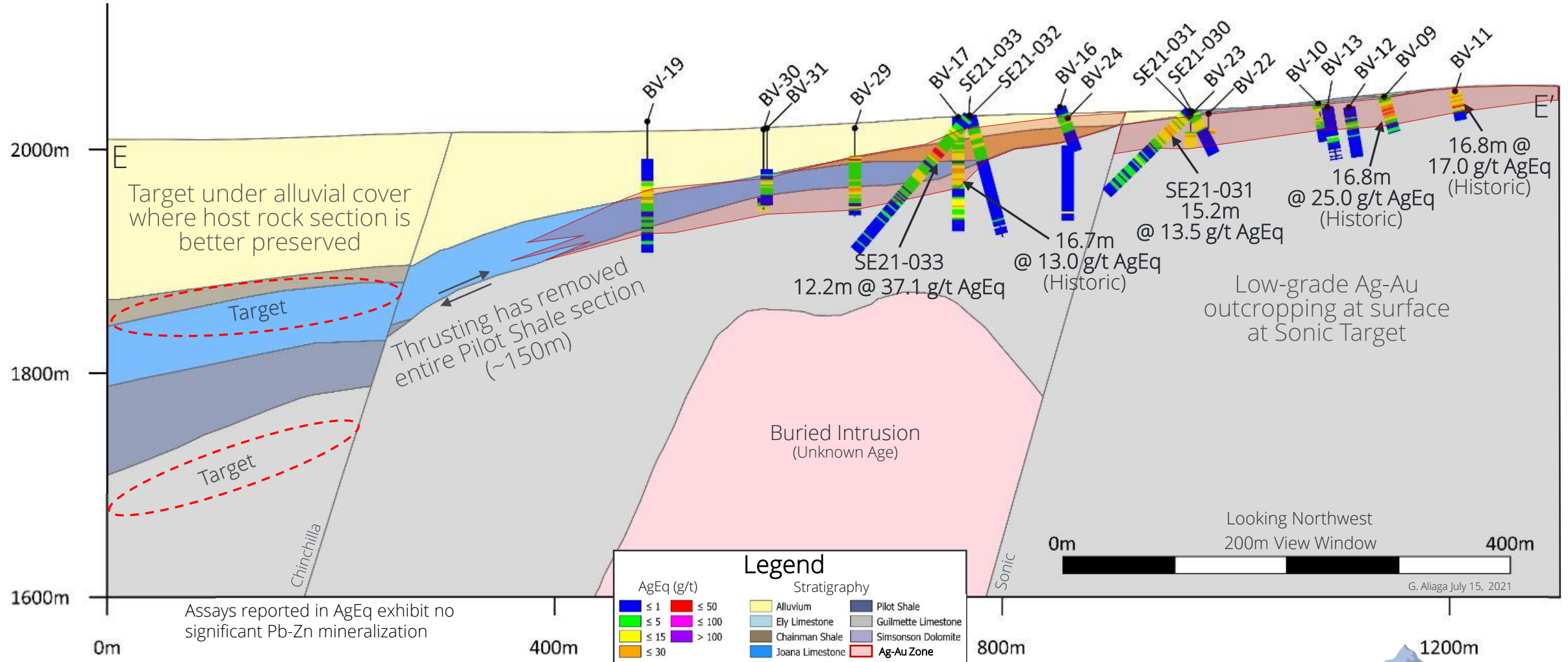
X-Section D-D'



- Assay Composite = X.Xm @ X.X g/t AgEq
- Silver Equivalent (AgEq) = Ag + (Au * 72)
- No recovery factor applied

SELENA

X-Section E-E'

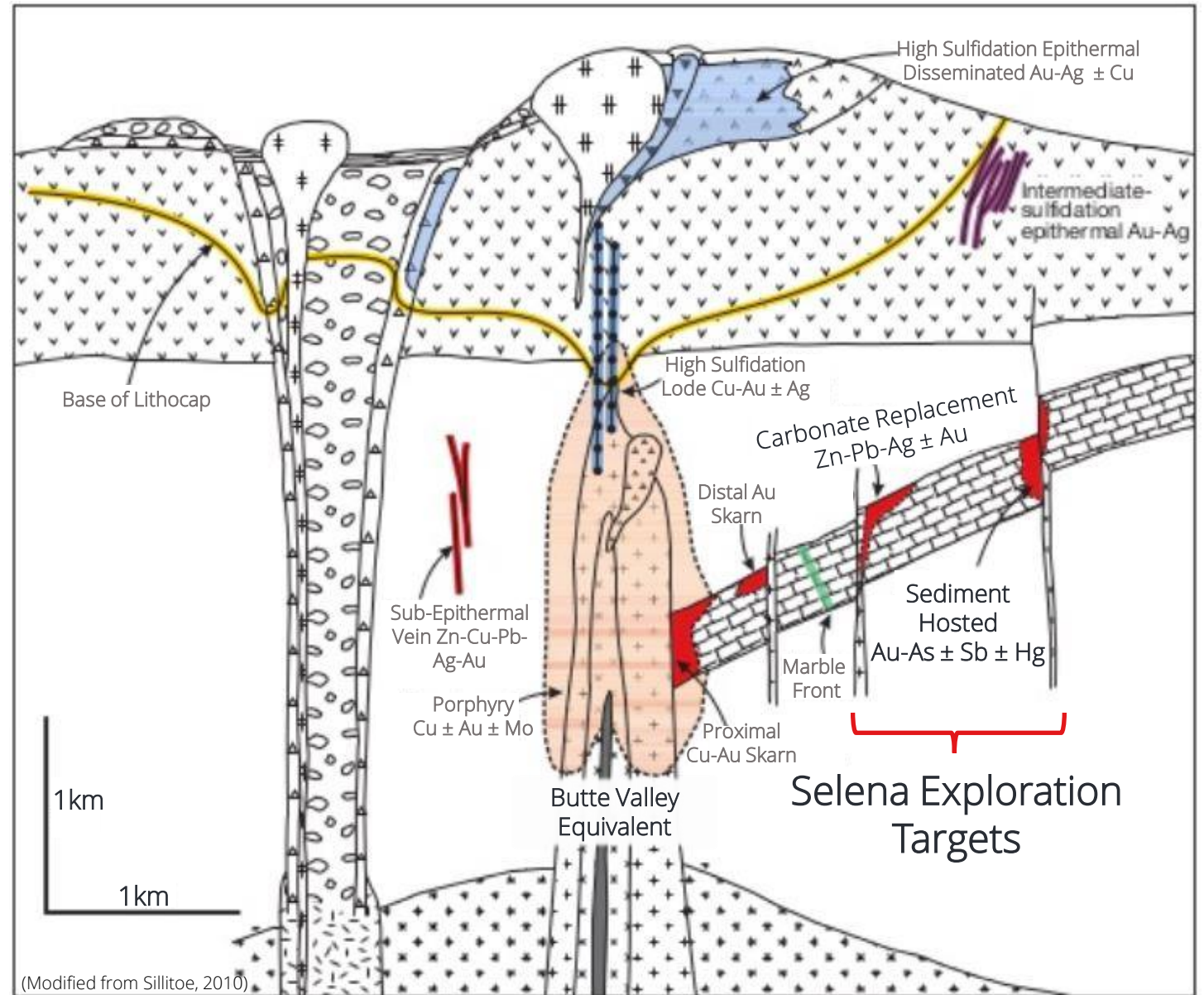


- Assay Composite = X.Xm @ X.X g/t AgEq
- Silver Equivalent (AgEq) = Ag + (Au * 72)
- No recovery factor applied

SELENA

CRD Zonation

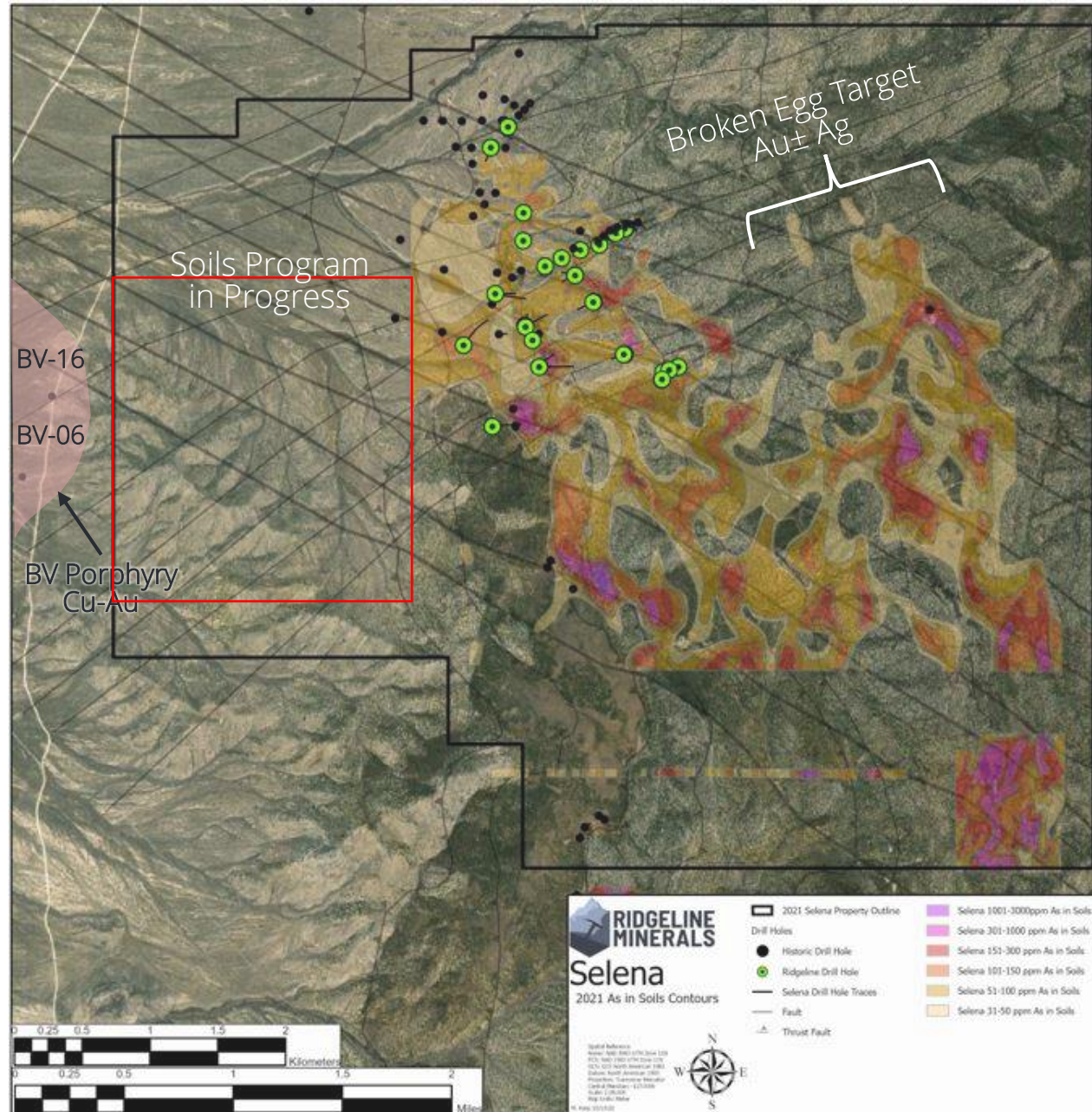
- Selena exhibits many of the key components of a Carbonate Replacement (CRD) system
 - ✓ Proximity to a Cu-Au porphyry (Butte Valley)
 - ✓ Deep oxidation pattern (>200m)
 - ✓ Thick limestone host rocks
 - ✓ Elevated surface suite of trace elements (As-Sb-Hg-Ag-Mn)
 - ✓ Ag-Pb-Zn \pm Au intercepts in drilling (SE21-024, 25 & 27)



SELENA

As in Soils

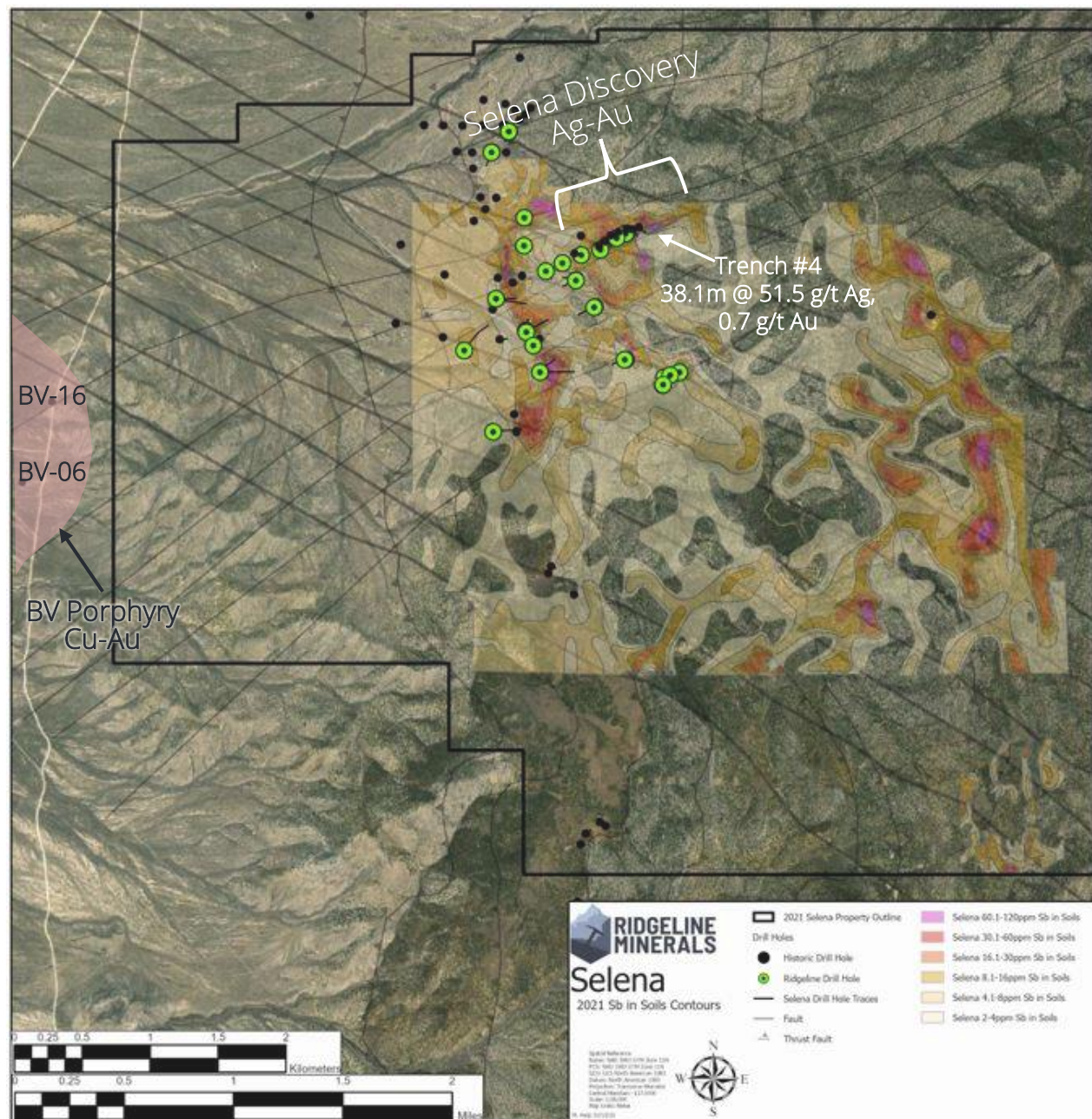
- Arsenic is at its highest on the eastern edge of the property at the Broken Egg target
 - Highlights the Carlin-Type end-member of the zonation pattern



SELENA

Sb in Soils

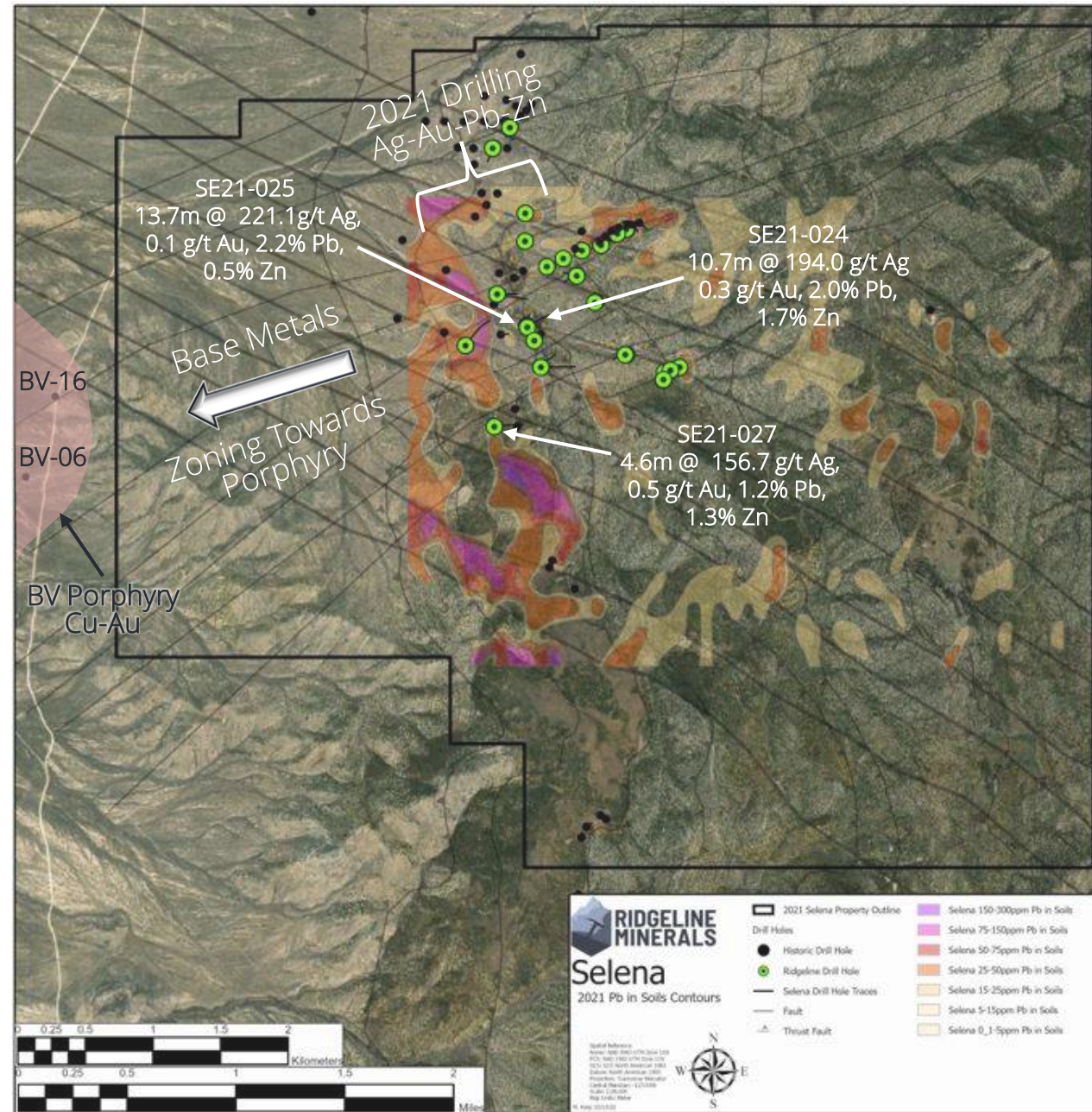
- Antimony highlights zone of highest Ag drilled to-date on the property



SELENA

Pb in Soils

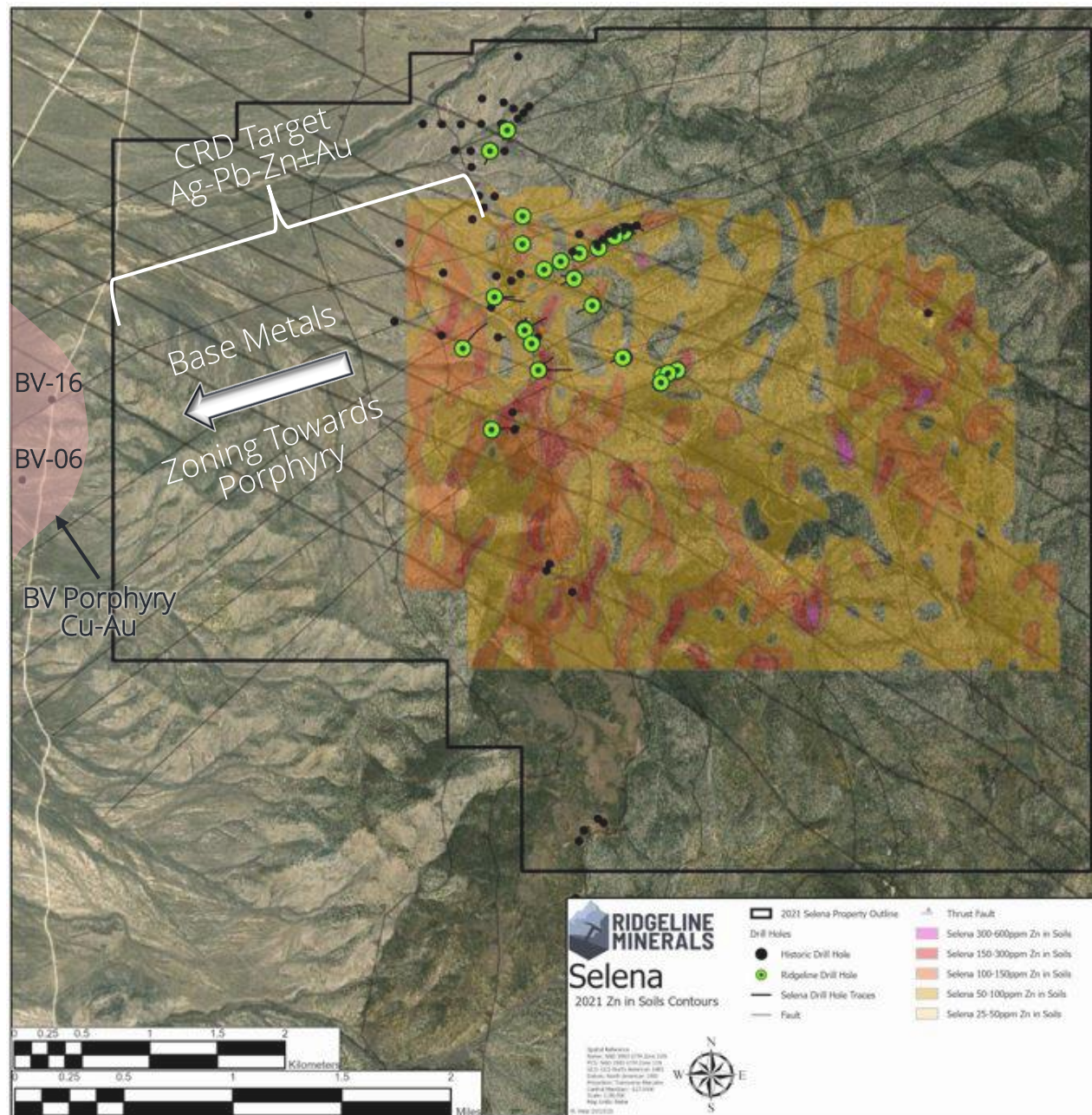
- Pb in soils values increasing steadily towards the Butte Valley porphyry



SELENA

Zn in Soils

- Zn in soils values increasing steadily towards the Butte Valley porphyry



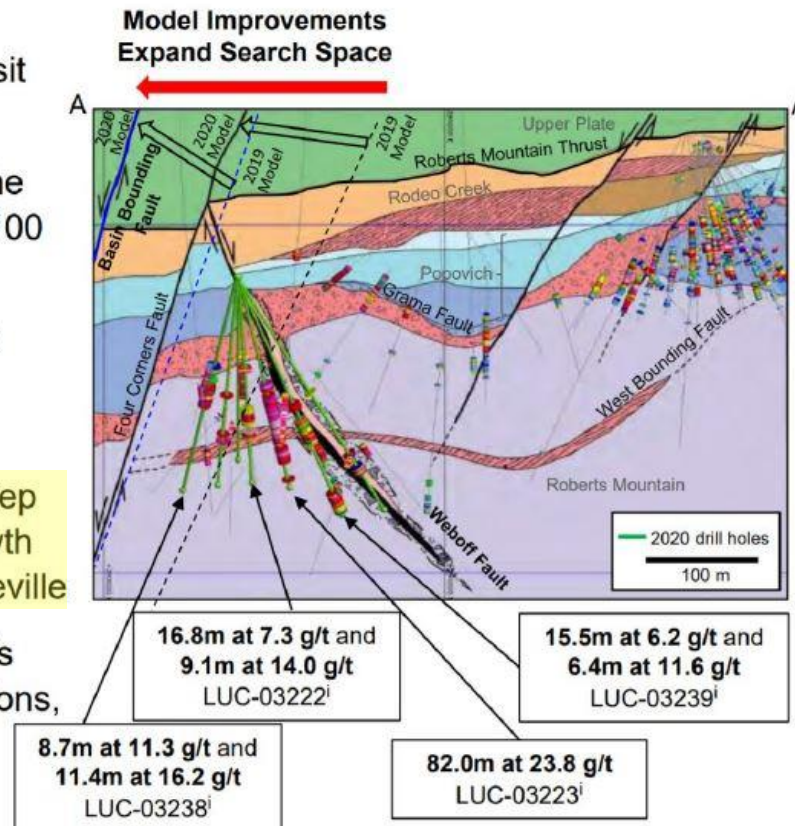
APPENDIX

Carlin-East

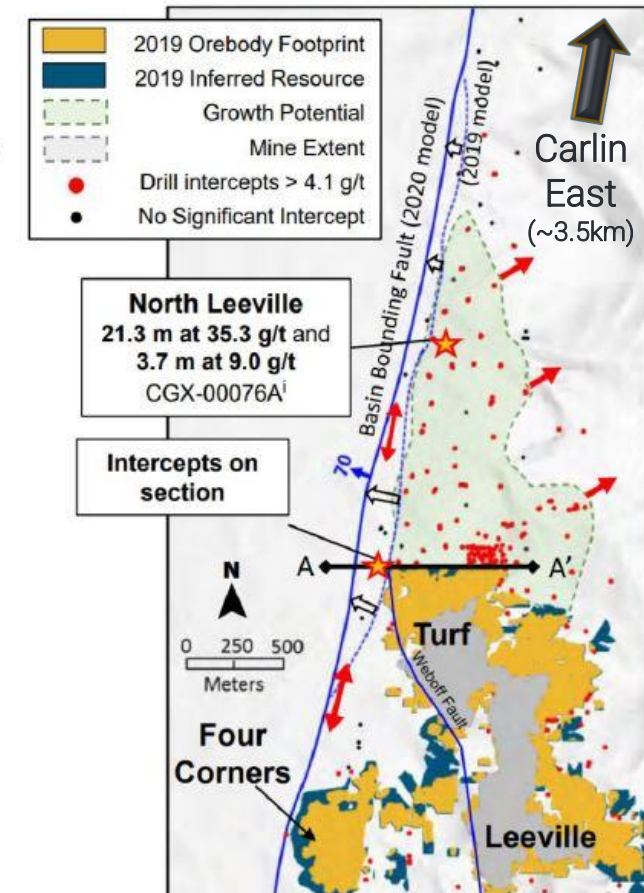
Barrick Q3, 2020 Investor Day

Leeville...growth Nevada, USA

- Basin Bounding Fault is the western boundary of the deposit
- New drill results together with model improvements shifted the fault and related splays 30 to 100 meters west
- Opening an opportunity to test extension of the mineralized Weboff intrusive-filled fault
- Results highlight an exciting step in realizing the significant growth potential north and west of Leeville
- In addition, model change adds new, shorter development options, reducing cost



BARRICK



Barrick Q4, 2020 Report

Nevada...mineral resource potential

USA

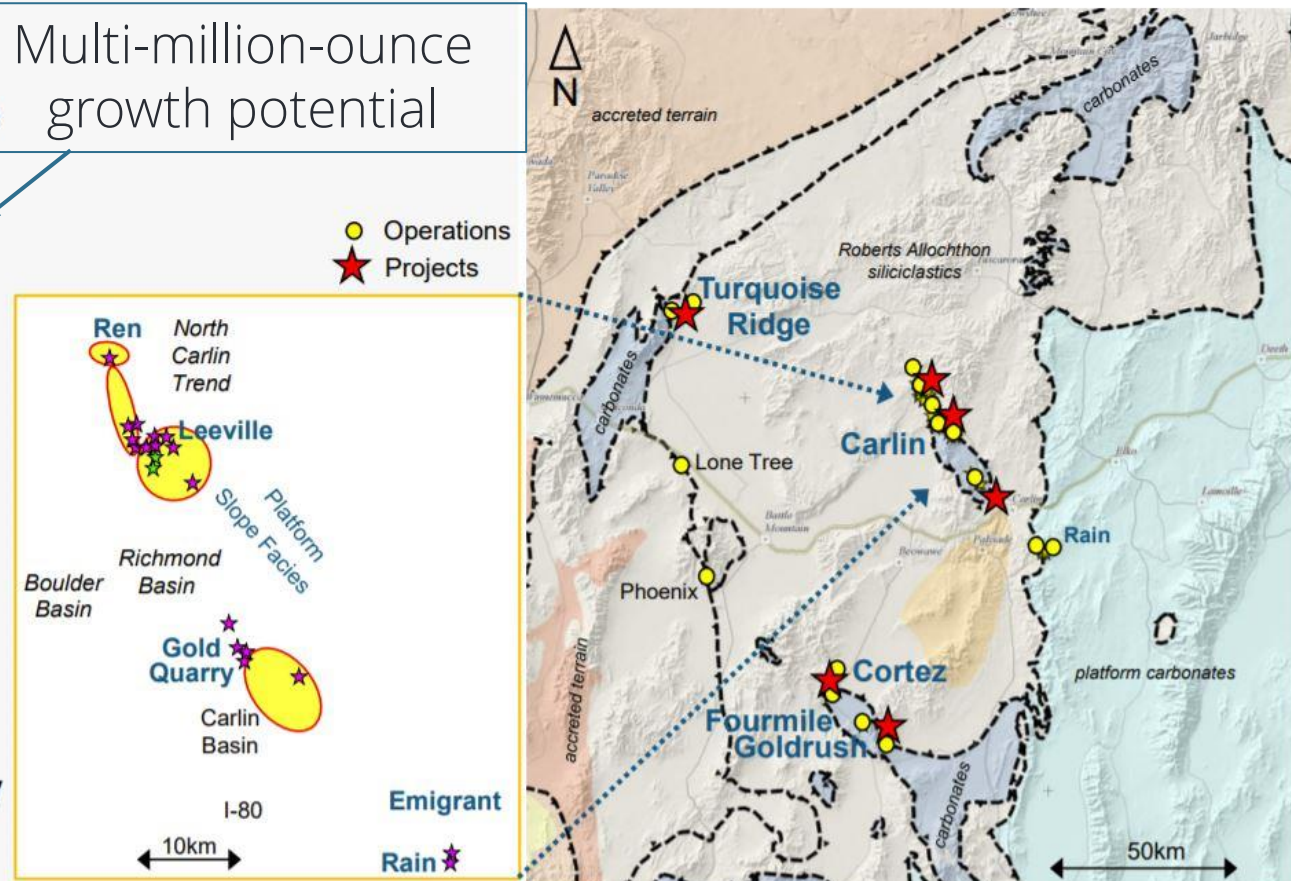
Best near to medium term exploration upside for additions to LOM

- North Leeville exploration upside: 17Mt to 39Mt at 5.5 g/t to 13.5 g/t
- Fourmile and Goldrush projects
- Ren deposit

Potential new discoveries

- Turquoise Ridge - Twin Creeks corridor
- Between Pipeline and Robertson
- Carlin Basin - south of Gold Quarry

Multi-million-ounce growth potential



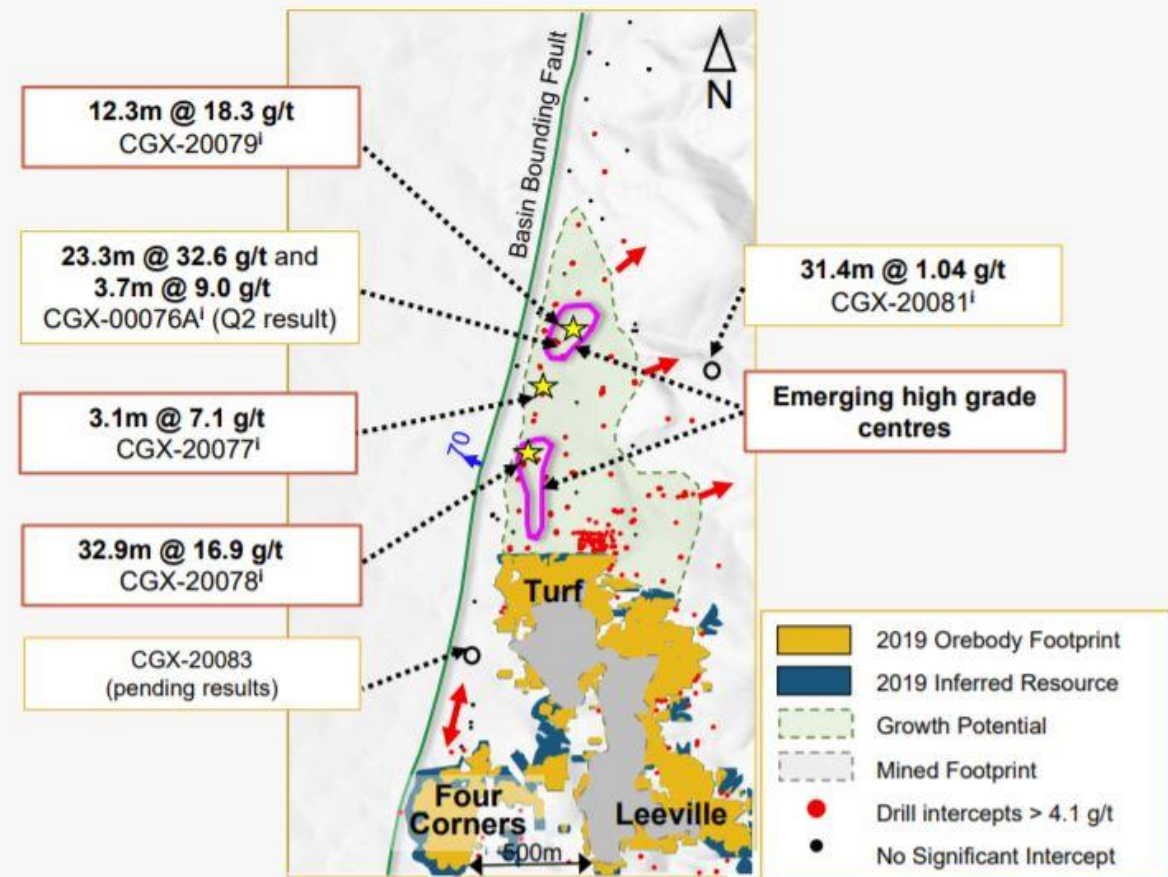
¹Potential quantities and grades in these preliminary results are conceptual in nature and there has been insufficient exploration to define a mineral resource at this time and it is uncertain that further exploration will result in the target being delineated as a mineral resource. On a 100% basis.

Barrick Q4, 2020 Report

North Leeville...drilling to add resources

Nevada

- Following high grade mineralisation along Basin Bounding fault – emerging growth target to add to mine plan
- 5 holes of 7 hole drill program completed confirming significant potential in the footwall of the Basin Bounding fault
- Closer to the mine, drilling from underground continues to extend the Turf orebody to north and west
- Drilling to add resources and support reserve conversion continues from both surface and underground platforms



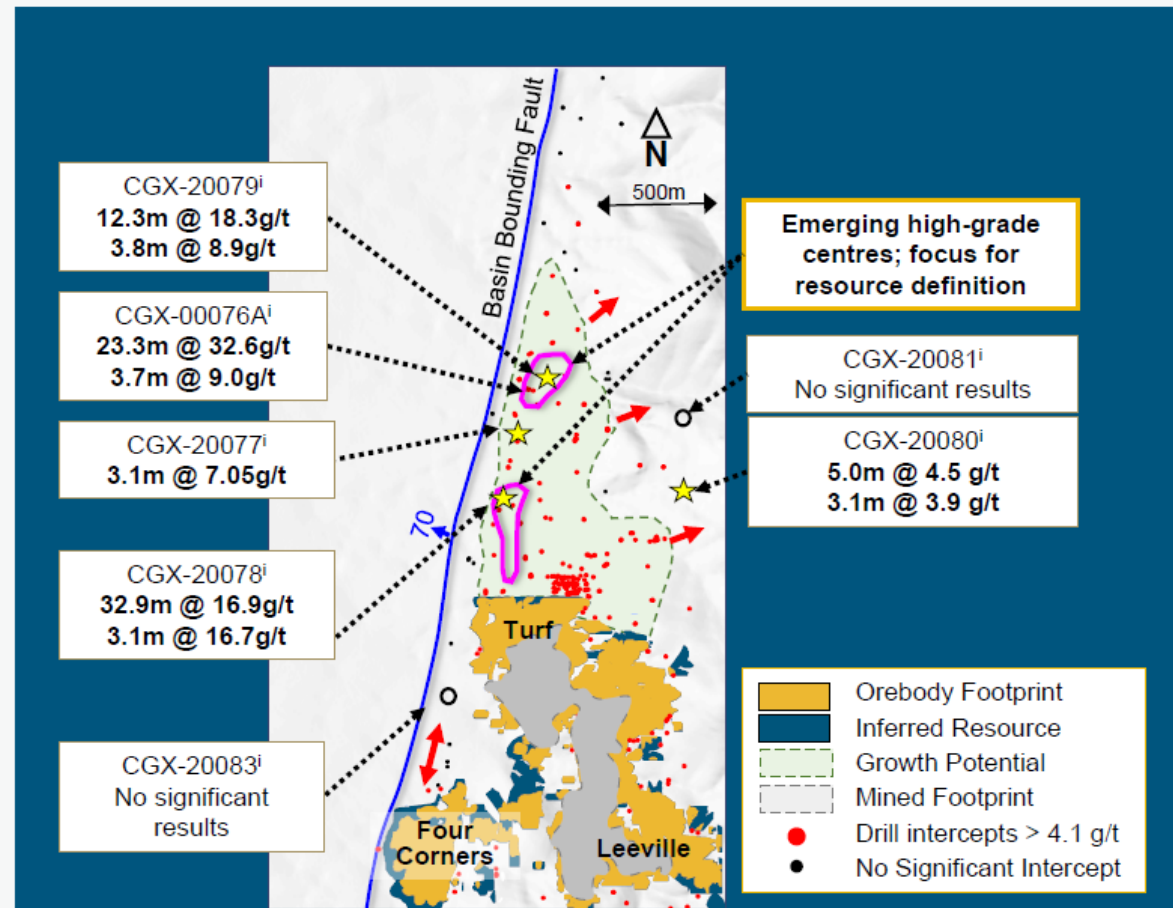
¹Refer to Appendix B for additional details including assay results for the significant intercepts

Barrick Q1, 2021 Report

North Leeville... growth opportunity

- Two emerging high grade zones within a broad tabular mineralized horizon
- Strong stratigraphic control enhanced by folding and cross faults
- Underground exploration drift advancing north from Turf to provide optimal drill platforms
- Further north, resource definition from surface platforms initiated this quarter
- Exploration continues to target eastward expansion

¹ Refer to Appendix B for additional details including assay results for the significant intercepts



APPENDIX

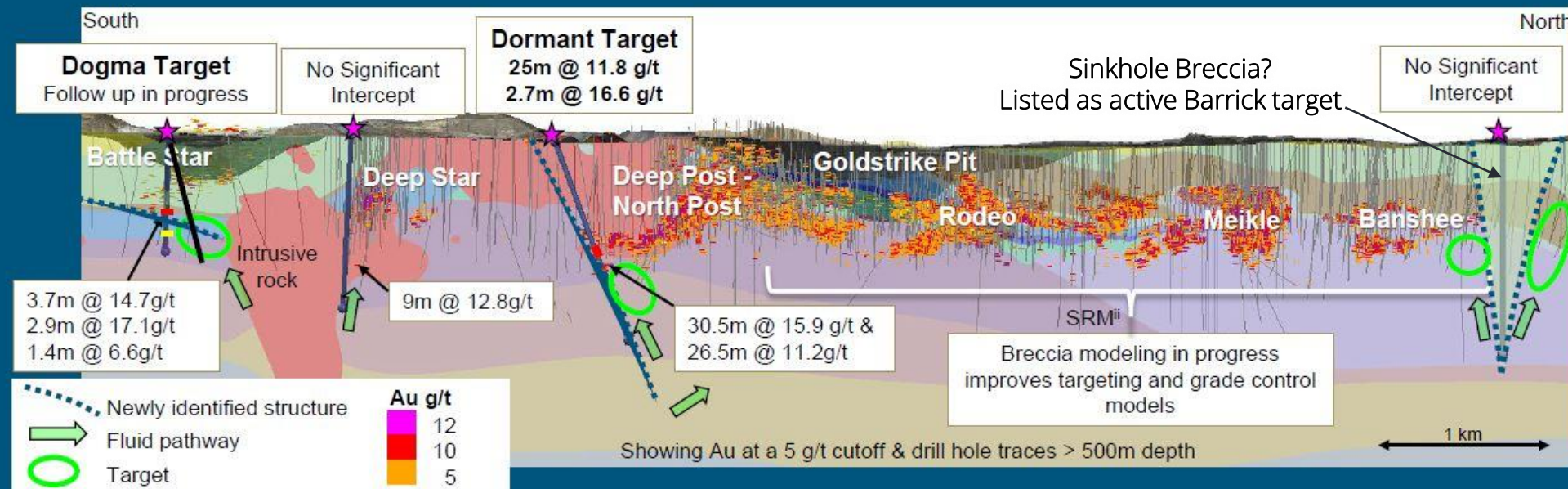
Bell Creek

Barrick Q1, 2021 Report

North Carlin Trend...

Targeting high grade extensions and new discoveriesⁱ

North Carlin Trend Long Section along Post-Gen Fault Corridor



- Dormant Target - 25m @ 11.8 g/t and 2.7m @ 16.6 g/t gold confirming down plunge extension of Deep Post
- Dogma Target - Follow-up drilling initiated targeting northern extension of Battle Star mineralization
- Breccia re-logging is complete; modeling on track to be delivered in Q2

ⁱ Refer to Appendix A for additional details including assay results for the significant intercepts ⁱⁱ Roberts Mountain Formation