

We are committed to providing [accessible customer service](#).  
If you need accessible formats or communications supports, please [contact us](#).

Nous tenons à améliorer [l'accessibilité des services à la clientèle](#).  
Si vous avez besoin de formats accessibles ou d'aide à la communication, veuillez [nous contacter](#).

PROSPECTING REPORT

CLAIM 4271123

W1/2 of N1/2  
Lot 2 Con 1

Benoit Township

August 2017  
Joe-Anne Salo

## **Introduction**

This claim was an old patent that came open on June 1, 2011 and was staked with no work done on it. It then again came open on July 5, 2013 and was staked by Lance Eden and then purchased by Steve Anderson who in turn transferred it to 2254022 Ontario Ltd.

An extension of time was applied for and granted on July 19, 2017 in order to await better weather conditions so that the swamp could drain up a bit. The work was performed August 2, 2017 and the samples were delivered that day to ActLabs in Timmins. As the assay results were not obtained by the due date, a request for another 1 week extension was applied for on August 25 and was granted for one month.

## **Location and Access**

From the junction of Municipal Road and Highway 101, travel east for 32 km to Highway 11 and continue driving south on Highway 11 for 34 kms. Turn left onto Bourkes Road. Travel along Bourkes Road for 5.5 kms by truck. The road then turns into grass. During this prospecting the creek was too flooded so the balance of travel was by foot for 1 km.

Claim 4271123 in a 2 unit claim located in the W1/2 of the N1/2 Lot 2 Concession 1 of Benoit Township. The claim was staked on July 5, 2013 and recorded on July 19, 2013.

## **History**

As this claim was an old patent, little to no work could be found in writing. It is mentioned as the Skognski Claims in OGS-1917 Annual Report pt. 4 p 251 and again in OGS-1971 GR 92, p 19 as the Daniel Keefe Claims. Both descriptions are extremely similar. This indicates to this writer that the data from Skognski was just regurgitated as the Keefe Claim.

When the claim reverted to the Crown in 2011, it was staked and then allowed to lapse with no work filed.

The work, labelled Keefe, appears on coloured OGS Map 2215 "Benoit and Maisonville Townships. Timiskaming District" by H. L. Lovell 1971, and on a black and white OGS Map P0329-"Benoit Township, District of Timiskaming" by H. L. Lovell 1966. The data on both maps is identical.

## **General Geology**

The area around Benoit Township lies between the Larder Lake and Destor-Porcupine Faults. This area of Abitibi volcanics extend from Timmins, Ontario to Chibougamau, Quebec. The area was mapped by H. L. Lovell in 1965 and appears to be metavolcanics that are tholeiitic in appearance and part of the Knojevis Group.

## **Current Program**

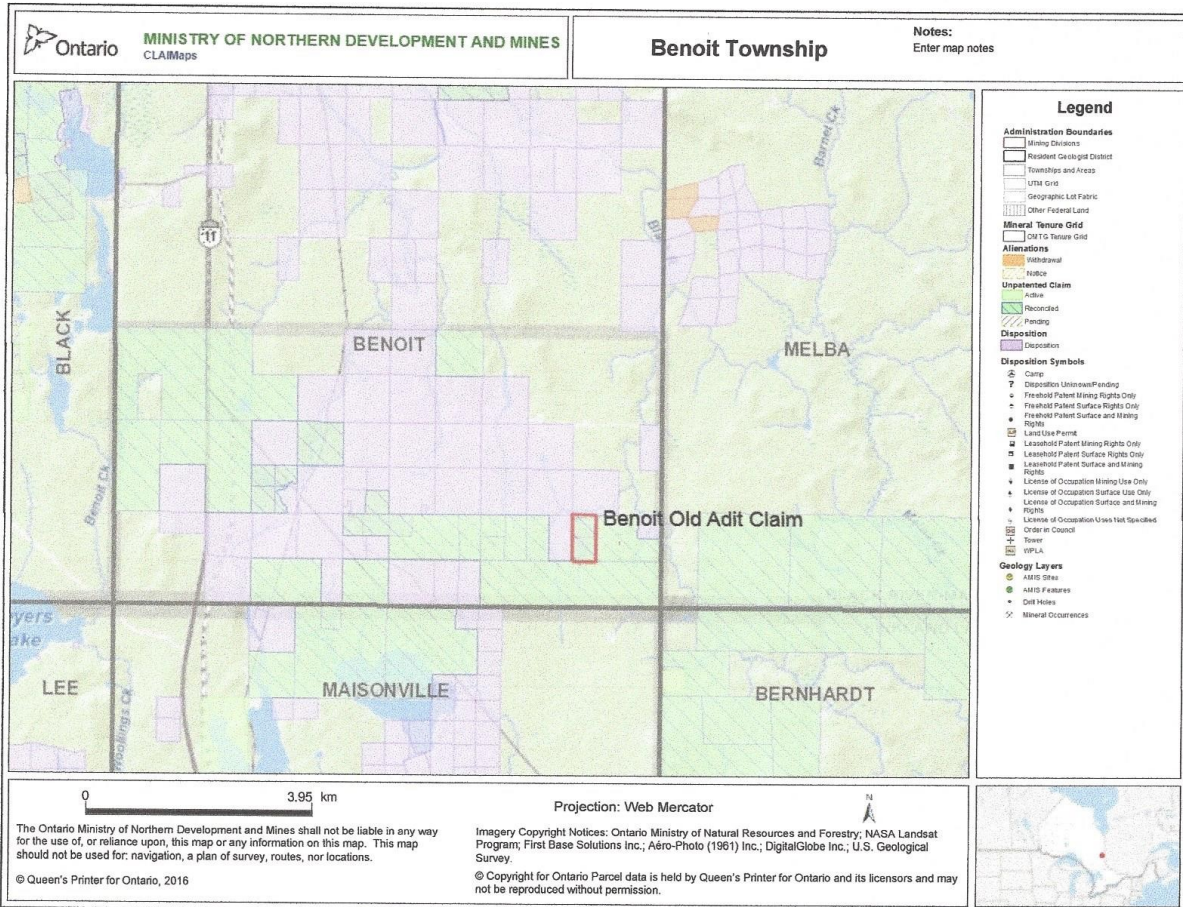
Only August 2 2017, Larry and Joe-Anne Salo attended the property. AS the swamp was flooded, the area to the pit was travelled by foot. The adit was the main focus of this program. 4 samples were collected and sent for assay.

## **Conclusions and Recommendations**

After being physically on the property to explore the adit, I recommend that the hillseds and old trenches be re-excavated. Once the geology can be followed properly, the it is deemed necessary to put diamond drilling into place.

It is apparent, with this being the second sampling program, that the gold is more associated with the green chlorites (possible carbonated) and not the quartz veining.





CLAIM MAP





Ontario

MINISTRY OF NORTHERN DEVELOPMENT AND MINES  
CLAIMaps

## Benoit Township

Notes:  
Enter map notes



### Legend

#### Administration Boundaries

- Mining Divisions
- Resident Geologist District
- Townships and Areas
- UTM Grid
- Geographic Lot Fabric
- Other Federal Land

#### Mineral Tenure Grid

- OM TG Tenure Grid

#### Alienations

- Withdrawal
- Notice

#### Unpatented Claim

- Active
- Reconciled
- Pending

#### Disposition

- Disposition

#### Disposition Symbols

- Camp
- Disposition Unknown/Pending
- Freehold Patent Mining Rights Only
- Freehold Patent Surface Rights Only
- Freehold Patent Surface and Mining Rights
- Land Use Permit
- Leasehold Patent Mining Rights Only
- Leasehold Patent Surface Rights Only
- Leasehold Patent Surface and Mining Rights
- License of Occupation Mining Use Only
- License of Occupation Surface Use Only
- License of Occupation Surface and Mining Rights
- License of Occupation Uses Not Specified
- Order in Council
- Tower
- WPLA

#### Geology Layers

- AMIS Sites
- AMIS Features
- Drill Holes
- Mineral Occurrences

0 0.99 km

Projection: Web Mercator

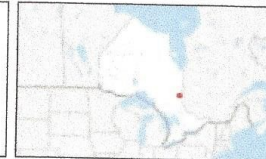


The Ontario Ministry of Northern Development and Mines shall not be liable in any way for the use of, or reliance upon, this map or any information on this map. This map should not be used for: navigation, a plan of survey, routes, nor locations.

© Queen's Printer for Ontario, 2016

Imagery Copyright Notices: Ontario Ministry of Natural Resources and Forestry; NASA Landsat Program; First Base Solutions Inc.; Aéro-Photo (1961) Inc.; DigitalGlobe Inc.; U.S. Geological Survey.

© Copyright for Ontario Parcel data is held by Queen's Printer for Ontario and its licensors and may not be reproduced without permission.







Yellow star- Sample 1132558-ledge of rock at adit entrance  
Zone 17-561806E, 5348719N



Red Star- Wall of adit sample 1132558 approximately 2 meters into adit  
No available GPS as there was no signal inside adit.





inside the adit showing still good timbers





Adit- approximately 6 feet tall and 5 feet wide- estimated walkable depth 30 feet





looking out adit entrance- quartz veining in place and very rusty





edge of downslope to adit-approximately 12 feet

This area is safe to climb down however there is an overhang directly above the adit that seems unstable





Sample 1132557 Dump on top of adit entrance  
UTM Zone 17- 561806E 5348719N  
It is approximately 12 feet straight down to adit entereance





Top of dump pile looking east- old trench in the fore ground



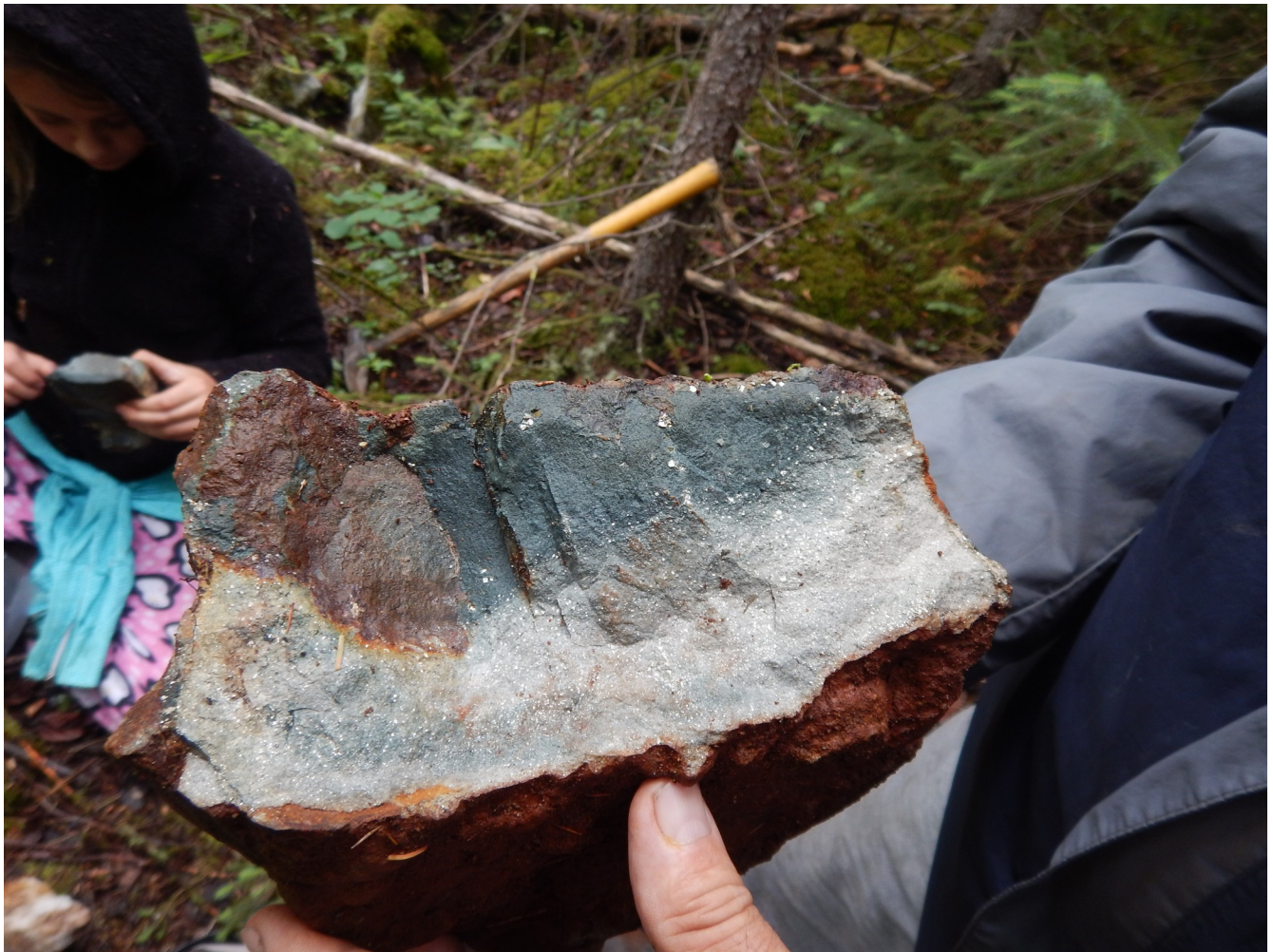


Sample 1132559- Dump pile east of adit  
UTM Zone 17- 561810E 5348718N





Sample from inside the adit- #1132556  
assayed 872ppb gold



Sample from dump pile immediately on top of entrance  
#1132557- assayed 13.2 g/t gold (>5000ppb)





Sample from trench 20' east of adit (just over the hill)  
Sample 1132559  
Assayed 4980 ppb gold



Sample from wall at adit entrance #1132558  
Assayed 1230 ppb gold





Old trench to east of adit- need cleaning out



Date Submitted: 02-Aug-17  
Invoice No.: A17-08121  
Invoice Date: 28-Aug-17  
Your Reference:

Larry Salo

ATTN: Larry Salo

### CERTIFICATE OF ANALYSIS

4 Rock samples were submitted for analysis.

The following analytical package(s) were requested:

Code 1A2-Timmins Au - Fire Assay AA

REPORT      A17-08121

This report may be reproduced without our consent. If only selected portions of the report are reproduced, permission must be obtained. If no instructions were given at time of sample submittal regarding excess material, it will be discarded within 90 days of this report. Our liability is limited solely to the analytical cost of these analyses. Test results are representative only of material submitted for analysis.

Notes:

If value exceeds upper limit we recommend reassay by fire assay gravimetric-Code 1A3.

CERTIFIED BY:

A handwritten signature in black ink, appearing to read "Emmanuel Esemé".

Emmanuel Esemé, Ph.D.  
Quality Control

ACTIVATION LABORATORIES LTD.  
1752 Riverside Drive, Timmins, Ontario, Canada, P4R 1N1  
TELEPHONE +705 264-0123 or +1.888.228.5227 FAX +1.905.648.9613  
E-MAIL Timmins@actlabs.com ACTLABS GROUP WEBSITE www.actlabs.com



# Results

Activation Laboratories Ltd.

Report: A17-08121

Analyte Symbol	Au	Au
Unit Symbol	ppb	g/tonne
Lower Limit	5	0.03
Method Code	FA-AA	FA- GRA
1132556	872	
1132557	> 5000	13.2
1132558	1230	
1132559	4980	

inside adit  
Dump  
Adit wall  
Trench

QC

Activation Laboratories Ltd.

Report: A17-08121

Analyte Symbol	Au	Au
Unit Symbol	ppb	g/tonne
Lower Limit	5	0.03
Method Code	FA-AA	FA- GRA
OREAS 206 Meas	2350	
OREAS 206 Cert	2197.0 00	
OXN117 Meas		7.56
OXN117 Cert		7.670
OxP116 Meas		14.9
OxP116 Cert		14.92
1132559 Orig	4980	
1132559 Split PREP DUP	4980	
Method Blank	< 5	
Method Blank	< 5	
Method Blank		< 0.03
Method Blank		< 0.03

Report Number: A17-08121  
Report Date: 28/8/2017

**Final Report**  
**Activation Laboratories**

Analyte Symbol	Au	Au
Unit Symbol	ppb	g/tonne
Detection Limit	5	0.03
Analysis Method	FA-AA	FA-GRA
1132556	872	
1132557	> 5000	13.2
1132558	1230	
1132559	4980	